

## ELECTRIC POWER INDUSTRY NEWS

### Lukoil put into operation the third solar power plant in the south of Russia

The solar power plant of the LUKOIL Group in Krasnodar received a Certificate of Qualification for a generating facility operating on a renewable energy source and was put into operation. The SPP with a capacity of 2.35 MW is located on two sites of the Krasnodar CHP, not involved in production, with a total area of 3.53 hectares.

Read full text: <https://minenergo.gov.ru/>

## COMPANY NEWS

### Tamboverenergo improves the quality of services provided to consumers

To improve efficiency in eliminating emergency outages, the branch of Rosseti Centre, PJSC - Tamboverenergo purchased 60 "Vector" devices. The devices were handed over to first responding mobile crews of Distribution Zones and line crews of distribution grids.

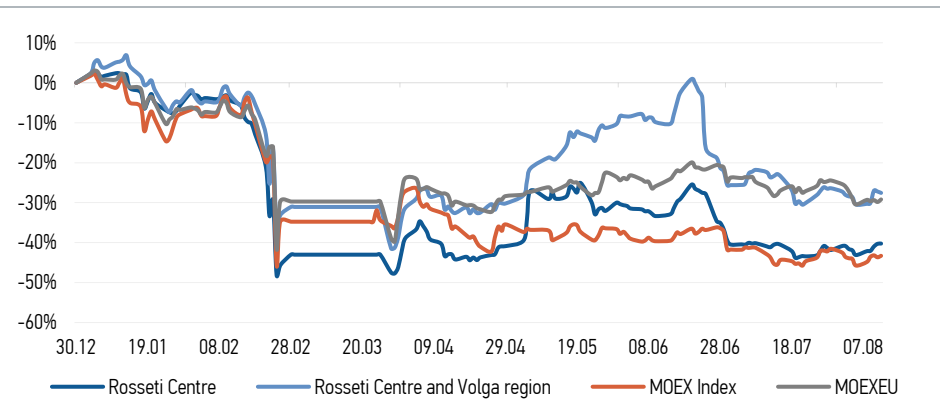
Read full text: <https://chr.aif.ru/>

### Vladimirenergo's specialists remind about the danger of taking photos and videos near power facilities

Power engineers pay special attention to the rules for prevention of electrical injuries among schoolchildren.

Read full text: <https://www.mrsk-cp.ru/>

## CHANGES OF KEY INDEXES AND SHARES OF THE COMPANIES



## IR-NEWS

- Financial statements of [Rosseti Centre](#) and [Rosseti Centre and Volga region](#) under RAS for 1H 2022 published
- [Integrated annual reports](#) of Rosseti Centre, PJSC and Rosseti Centre and Volga region, PJSC for 2021 published
- Annual General Meetings of Shareholders of [Rosseti Centre](#) and [Rosseti Centre and Volga region](#) held

## Rosseti Centre, PJSC

119017, Moscow, Malaya Ordynka St., 15

Corporate Governance Department

+7 (495) 747 92 92, ext. 33-34

ir@mrsk-1.ru

<http://www.mrsk-1.ru/en/investors/>



World indexes	Value	Change	
		per day	fr 31.12.21
MOEX Russia	2 147,33	0,67%	-43,30%
S&P 500	4 280,15	1,73%	-10,20%
FTSE 100	7 500,89	0,47%	1,58%
Nikkei	28 546,98	2,62%	-0,85%
Sensex	59 462,78	0,00%	2,08%
CSI300	4 191,15	0,00%	-15,17%
Bovespa	112 764,26	2,78%	7,58%

Source: MOEX, Company calculations

Currency rates	Value	Change	
		per day	fr 31.12.21
USD/RUB	60,6229	0,28%	-18,40%
EURO/RUB	62,5156	1,32%	-25,64%

Source: Central Bank of Russia, Company calculations

Liquidity of shares	Rosseti	
	Centre	Centre & Volga Reg
Number of deals, pcs	857	337
Trading volume, ₪ mln	5,6	2,7
Trading volume, mln pcs	22,9	16,4
Average trading volume over the last 30 days, mln pcs	30,4	57,5
% of the share capital	0,05%	0,01%

Source: MOEX, Company calculations

Shares	Price*, ₪	MCap, ₪ bln	MCap, \$ mln
Rosseti Centre	0,2464	10,40	171,59
Rosseti Centre and Volga region	0,1671	18,83	310,64

Source: MOEX, Company calculations

Comparison with indexes	Change	
	per day	fr 31.12.21
STOXX 600 Utilities	0,38%	-5,60%
MoexEU	0,92%	-29,19%
Rosseti Centre*	0,08%	-40,25%
Rosseti Centre and Volga region*	-0,48%	-27,57%

Source: MOEX, Company calculations

Grid companies	Change*	
	per day	fr 31.12.21
Rosseti	-0,20%	-46,12%
Rosseti FGC UES	0,15%	-43,91%
Rosseti Volga	-0,51%	-41,35%
Rosseti Moscow Region	0,75%	-29,49%
Rosseti Northern Caucasus	0,21%	-64,23%
Rosseti North-West	0,00%	-47,34%
Rosseti Ural	-2,18%	-13,48%
Rosseti Siberia	-0,75%	-23,71%
Rosseti South	0,16%	-31,01%
Rosseti Lenenergo	-0,15%	-22,43%
Rosseti Tomsk	0,00%	-29,09%
Rosseti Kuban	0,00%	-16,89%

Source: MOEX, Company calculations

\* - at the market price at MOEX

## ickers

Moscow Exchange (MOEX)

Bloomberg

Reuters

[MRKC](#)

[MRKC RM](#)

[MRKC.MM](#)