

ELECTRIC POWER INDUSTRY NEWS

Petr Bobylev: "Russia is actively developing the renewable energy sector"

Russia is actively developing the renewable energy sector, said Deputy Minister of Energy of Russia Petr Bobylev at the panel session of the Assembly of the International Renewable Energy Agency (IRENA) "Dialogue between the public and private sectors. Renewable Energy Sources and the Circular Economy".

Read full text: <https://minenergo.gov.ru/>

COMPANY NEWS

Power supply restored in three districts and 2 municipalities of the Bryansk region

In the Bryansk region, power supply was restored in the Zlynkovsky, Pogarsky and Pochepsky districts, as well as in the Starodubsky and Novozybkovsky municipalities. This was reported in the press service of the regional department of the Ministry of Emergency Situations. On the eve because of the strong wind, these areas were left without electricity. The emergency recovery crews of the energy service were engaged in eliminating the consequences of the disaster. 72 people and 27 cars were involved in the work.

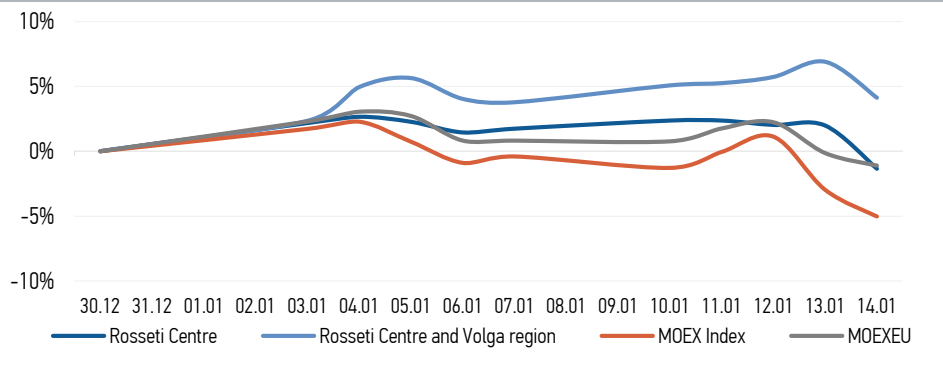
Read full text: <https://www.bragazeta.ru/news/>

Kalugaenergo summed up the results of the mobilization of forces and means during the New Year holidays and non-working days

The Kalugaenergo branch summed up the results of the work of operational forces and means during the holidays and non-working days. From 4:00 pm on 4 January to 11:30 am on 8 January 2022, Kaluga power engineers were on high alert.

Read full text: https://www.mrsk-cp.ru/press/company_news/

CHANGES OF KEY INDEXES AND SHARES OF THE COMPANIES



IR-NEWS

- [Rosseti Centre](#) and [Rosseti Centre and Volga region](#) approved the Companies' Business Plan for 2022
- [Rosseti Centre - managing organization of Rosseti Centre and Volga region held a conference call and webcast on the results for 9 months of 2021](#)
- [Rosseti Centre](#) and [Rosseti Centre and Volga region](#) published their performance results for 9 months of 2021 under IFRS

| World indexes | Value | Change | |
|---------------|------------|---------|-------------|
| | | per day | fr 31.12.21 |
| MOEX Russia | 3 596,98 | -2,12% | -5,02% |
| S&P 500 | 4 662,85 | 0,08% | -2,17% |
| FTSE 100 | 7 555,43 | -0,11% | 2,31% |
| Nikkei | 28 124,28 | -1,28% | -2,32% |
| Sensex | 61 223,03 | -0,02% | 5,10% |
| CSI300 | 4 726,73 | -0,82% | -4,32% |
| Bovespa | 106 927,80 | 1,33% | 2,01% |

Source: MOEX, Company calculations

| Currency rates | Value | Change | |
|----------------|---------|---------|-------------|
| | | per day | fr 31.12.21 |
| USD/RUB | 74,5686 | 0,05% | 0,37% |
| EURO/RUB | 85,4556 | 0,93% | 1,65% |

Source: Central Bank of Russia, Company calculations

| Liquidity of shares | Rosseti Centre & Volga Reg | |
|---|----------------------------|----------------------------|
| | Rosseti Centre | Rosseti Centre & Volga Reg |
| Number of deals, pcs | 454 | 1 155 |
| Trading volume, P mln | 4,1 | 16,6 |
| Trading volume, mln pcs | 9,7 | 67,5 |
| Average trading volume over the last 30 days, mln pcs | 18,2 | 59,4 |
| % of the share capital | 0,02% | 0,06% |

Source: MOEX, Company calculations

| Shares | Price*, P | MCap, P bln | MCap, \$ mln |
|---------------------------------|-----------|-------------|--------------|
| Rosseti Centre | 0,4068 | 17,17 | 230,31 |
| Rosseti Centre and Volga region | 0,2402 | 27,07 | 363,02 |

Source: MOEX, Company calculations

| Comparison with indexes | Change | |
|----------------------------------|---------|-------------|
| | per day | fr 31.12.21 |
| STOXX 600 Utilities | -0,48% | -2,35% |
| MoexEU | -0,96% | -1,10% |
| Rosseti Centre* | -3,28% | -1,36% |
| Rosseti Centre and Volga region* | -2,60% | 4,12% |

Source: MOEX, Company calculations

| Grid companies | Change* | |
|---------------------------|---------|-------------|
| | per day | fr 31.12.21 |
| Rosseti | -3,00% | 0,48% |
| Rosseti FGC UES | -2,57% | 0,35% |
| Rosseti Volga | -0,40% | 0,00% |
| Rosseti Moscow Region | -2,21% | -0,08% |
| Rosseti Northern Caucasus | -2,13% | -4,32% |
| Rosseti North-West | -2,71% | -2,81% |
| Rosseti Ural | -2,53% | 0,34% |
| Rosseti Siberia | -4,84% | -4,02% |
| Rosseti South | -1,10% | -0,22% |
| Rosseti Lenenergo | -4,22% | -2,39% |
| Rosseti Tomsk | -0,60% | -8,31% |
| Rosseti Kuban | -1,45% | 3,50% |

Source: MOEX, Company calculations

* - at the market price at MOEX

Rosseti Centre, PJSC

119017, Moscow, Malaya Ordynka St., 15

Corporate Governance Department

+7 (495) 747 92 92, ext. 33-34

ir@mrsk-1.ru

<http://www.mrsk-1.ru/en/investors/>



Tickers

Moscow Exchange (MOEX)

Bloomberg

Reuters

[MRKC](#)

[MRKC.RM](#)

[MRKC.MM](#)