

### ELECTRIC POWER INDUSTRY NEWS

#### Changes have been made to the rules for connection to power grids

A resolution of the Russian government amending the rules for connection to power grids has been published on the official Internet portal of legal information. The document appeared on the website on Tuesday, 27 August.

The resolution removes regulatory restrictions on the redistribution of maximum capacity, which will allow for the rational use of existing power grids, as well as improve conditions for new customers.

Read full text: <https://eprussia.ru/>

### COMPANY NEWS

#### Lipetskenergo took part in "Designing the Future"

At the City Youth Centre, Lipetskenergo's Youth Council held a meeting with heads of trade union organizations as part of a series of political and economic games called "Designing the Future". Young energy leaders jointly discussed strategies for development and optimal distribution of the regional social budget, which is allocated to the region annually.

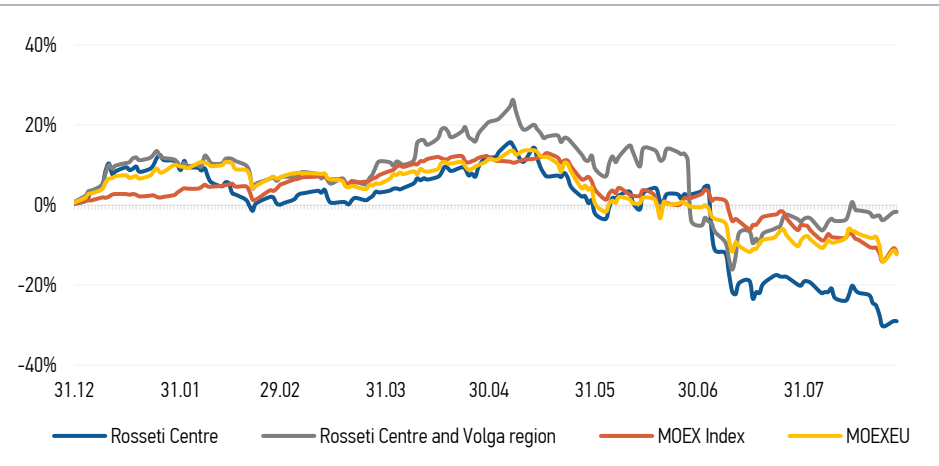
Read full text: <https://energy48.ru/>

#### Kirovenergo invites to a Customer Day on 29 August

On Thursday, 29 August, the branch of Rosseti Centre and Volga region, PJSC - Kirovenergo will hold a Customer Day. During it, residents of the region can consult on issues of connection to electric grids. The event will take place in the public reception office of the Vyatka Chamber of Commerce and Industry at the address: Kirov, Profsoyuznaya St., 4. Reception hours - from 10:00 to 12:00 am.

Read full text: <https://mrsk-cp.ru/>

### CHANGES OF KEY INDEXES AND SHARES OF THE COMPANIES



### IR-NEWS

- Financial statements of [Rosseti Centre](#) and [Rosseti Centre and Volga region](#) under RAS for 6M 2024 published
- [Rosseti Centre](#) and [Rosseti Centre and Volga region](#) published integrated annual reports for 2023
- [Rosseti Centre, PJSC](#) – managing organization of [Rosseti Centre and Volga region, PJSC](#) published a presentation on the companies' performance results for 3 months of 2024

### Rosseti Centre, PJSC

119017, Moscow, Malaya Ordynka St., 15

Corporate Governance Department

+7 (495) 747 92 92, ext. 33-34

ir@mrsk-1.ru

<http://www.mrsk-1.ru/en/investors/>



### Tickers

Moscow Exchange (MOEX)

Bloomberg

Reuters

[MRKC](#)

[MRKC.RM](#)

[MRKC.MM](#)

World indexes	Value	Change	
		per day	fr 31.12.23
MOEX Russia	2 730,38	-1,21%	-11,90%
S&P 500	5 625,80	0,16%	46,92%
FTSE 100	8 345,46	0,21%	11,99%
Nikkei	38 288,62	0,47%	48,29%
Sensex	81 711,76	0,02%	34,30%
CSI300	3 305,33	-0,57%	-14,30%
Bovespa	136 775,91	-0,08%	29,85%

Source: MOEX, Company calculations

Currency rates	Value	Change	
		per day	fr 31.12.23
USD/RUB	91,7745	0,19%	1,63%
EURO/RUB	102,4927	0,87%	1,93%

Source: Central Bank of Russia, Company calculations

Liquidity of shares	Rosseti Centre	Rosseti Centre & Volga Reg
Number of deals, pcs	1 660	674
Trading volume, P mln	20,3	19,5
Trading volume, mln pcs	50,7	64,5
Average trading volume over the last 30 days, mln pcs	60,9	103,8
% of the share capital	0,12%	0,06%

Source: MOEX, Company calculations

Shares	Price*, P	MCap, P bln	MCap, \$ mln
Rosseti Centre	0,3994	16,86	183,73
Rosseti Centre and Volga region	0,3031	34,16	372,20

Source: MOEX, Company calculations

Comparison with indexes	Change	
	per day	fr 31.12.23
STOXX 600 Utilities	0,14%	9,42%
MoexEU	-1,14%	-12,34%
Rosseti Centre*	0,00%	-29,01%
Rosseti Centre and Volga region*	0,13%	-1,69%

Source: MOEX, Company calculations

Grid companies	Change*	
	per day	fr 31.12.23
Rosseti	-0,76%	-13,32%
Rosseti Volga	-1,24%	7,49%
Rosseti Moscow Region	-0,09%	-10,06%
Rosseti Northern Caucasus	2,92%	-20,85%
Rosseti North-West	-3,25%	-22,38%
Rosseti Ural	1,31%	9,29%
Rosseti Siberia	-1,35%	-16,24%
Rosseti South	-0,51%	2,25%
Rosseti Lenenergo	-0,50%	-14,95%
Rosseti Tomsk	-2,41%	7,37%
Rosseti Kuban	1,06%	-8,06%

Source: MOEX, Company calculations

\* - at the market price at MOEX