

ELECTRIC POWER INDUSTRY NEWS
Electricity consumption in the Russian Federation in January-July 2022 increased by 1.8%, in July it decreased by 0.2%, - SO UES

Electricity consumption in the UES of Russia for 7 months of 2022 in annual terms increased by 1.8% and amounted to 638.2 billion kWh. On the whole in Russia, the figure increased by 1.9% to 648.1 billion kWh, the System Operator reported.

Read full text: <https://www.bigpowernews.ru/>

COMPANY NEWS
Igor Makovskiy: the planned execution of the repair program is the most important task in all territories where the Companies operate, including the border areas

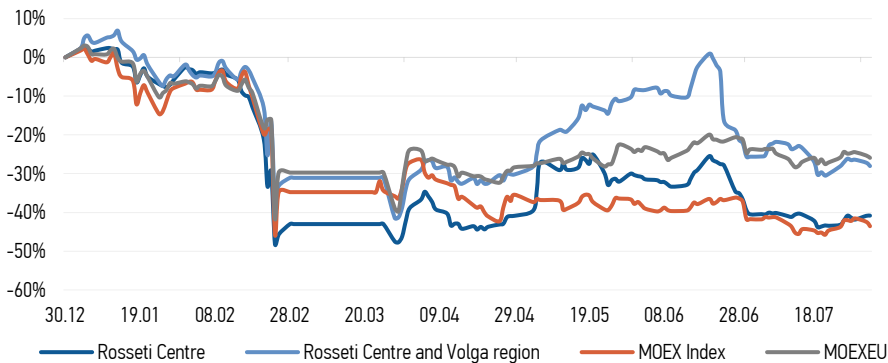
General Director of Rosseti Centre, PJSC - the managing organization of Rosseti Centre and Volga region, PJSC checked the progress of the annual equipment maintenance and repair plan.

Read full text: <https://www.mrsk-1.ru/>

Nizhnovenergo's specialists continue conducting electrical safety lessons for children during the holidays

The next meeting dedicated to the rules of electrical safety was held in the children's health camp named after Yuri Gagarin in the Nizhny Novgorod region. In July, the power engineers held a lesson for 159 children aged 7 to 15 years.

Read full text: <https://mrsk-cp.ru/>

CHANGES OF KEY INDEXES AND SHARES OF THE COMPANIES

IR-NEWS

- [Integrated annual reports](#) of Rosseti Centre, PJSC and Rosseti Centre and Volga region, PJSC for 2021 published
- Annual General Meetings of Shareholders of [Rosseti Centre](#) and [Rosseti Centre and Volga region](#) held
- [Rosseti Centre](#) and [Rosseti Centre and Volga region](#) published their performance results for 3 months of 2022 under IFRS

Rosseti Centre, PJSC

119017, Moscow, Malaya Ordynka St., 15

Corporate Governance Department

+7 (495) 747 92 92, ext. 33-34

ir@mrsk-1.ru

<http://www.mrsk-1.ru/en/investors/>



World indexes	Value	Change	
		per day	fr 31.12.21
MOEX Russia	2 137,30	-1,96%	-43,57%
S&P 500	4 091,19	-0,67%	-14,16%
FTSE 100	7 409,11	-0,06%	0,33%
Nikkei	27 594,73	-1,42%	-4,16%
Sensex	58 136,36	0,00%	-0,20%
CSI300	4 107,02	-1,95%	-16,87%
Bovespa	103 361,70	1,11%	-1,39%

Source: MOEX, Company calculations

Currency rates	Value	Change	
		per day	fr 31.12.21
USD/RUB	62,0506	1,21%	-16,48%
EURO/RUB	63,2468	1,08%	-24,77%

Source: Central Bank of Russia, Company calculations

Liquidity of shares	Rosseti Centre & Volga Reg	
	Rosseti Centre	Rosseti Centre & Volga Reg
Number of deals, pcs	489	446
Trading volume, P mln	2,8	4,4
Trading volume, mln pcs	11,6	26,7
Average trading volume over the last 30 days, mln pcs	52,0	131,5
% of the share capital	0,03%	0,02%

Source: MOEX, Company calculations

Shares	Price*, P	MCap, P bln	MCap, \$ mln
Rosseti Centre	0,2440	10,30	166,01
Rosseti Centre and Volga region	0,1660	18,71	301,49

Source: MOEX, Company calculations

Comparison with indexes	Change	
	per day	fr 31.12.21
STOXX 600 Utilities	0,52%	-6,23%
MoexEU	-0,80%	-25,93%
Rosseti Centre*	0,08%	-40,83%
Rosseti Centre and Volga region*	-1,19%	-28,05%

Source: MOEX, Company calculations

Grid companies	Change*	
	per day	fr 31.12.21
Rosseti	-1,22%	-26,40%
Rosseti FGC UES	-1,38%	-42,60%
Rosseti Volga	-0,17%	-39,54%
Rosseti Moscow Region	-2,52%	-29,78%
Rosseti Northern Caucasus	-0,21%	-63,93%
Rosseti North-West	-2,85%	-47,14%
Rosseti Ural	-0,91%	-13,48%
Rosseti Siberia	0,18%	-21,98%
Rosseti South	-1,09%	-29,57%
Rosseti Lenenergo	-0,60%	-20,53%
Rosseti Tomsk	0,00%	-29,09%
Rosseti Kuban	0,00%	-12,18%

Source: MOEX, Company calculations

* - at the market price at MOEX

Tickers

Moscow Exchange (MOEX)

[MRKC](#)

Bloomberg

[MRKC.MM](#)

Reuters

[MRKC.MM](#)