

ELECTRIC POWER INDUSTRY NEWS

Electricity tariffs for rural residents with electric stoves could rise to urban levels

This follows from the new federal pricing rules. On their basis, the Moscow regulator has already equated the villagers with the townspeople, which led to an increase in tariffs for residents of New Moscow settlements in some cases by 60%. As a result, the amount of cross-subsidization in the region for 2023 decreased by 47%, to 1.7 billion rubles. Meanwhile, the FAS notes that regions do not have to follow the federal rules.

Read full text: <https://www.bigpowernews.ru/>

COMPANY NEWS

Igor Makovskiy: timely provision of requests for grid connection contributes to the socio-economic development of the regions

Igor Makovskiy, General Director of Rosseti Centre, PJSC - the managing organization of Rosseti Centre and Volga region, PJSC, at the meeting discussed the implementation of the action plan to ensure the performance of requests for connection to electric grids.

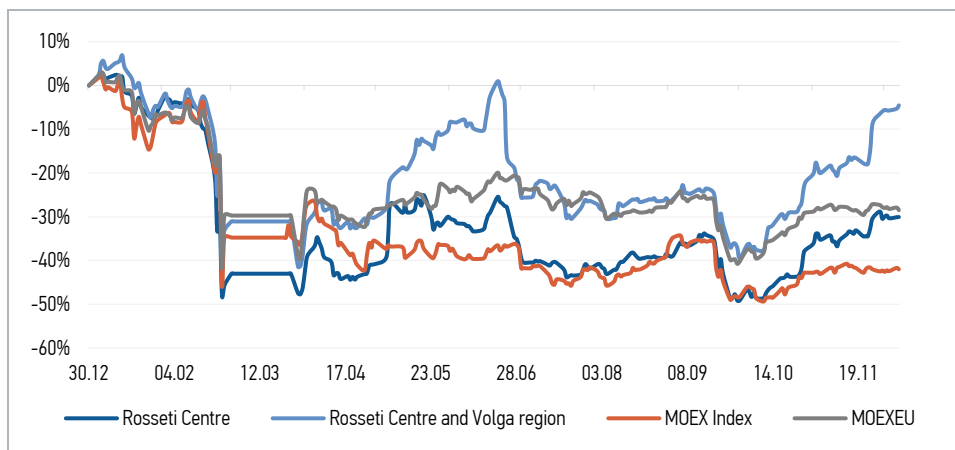
Read full text: <https://www.mrsk-1.ru/>

The Kirovenergo branch invites to the "Customer Day"

The branch of Rosseti Centre and Volga region, PJSC - Kirovenergo will host another Customer Day. The face-to-face reception of applicants will be conducted by the branch director Vladimir Kolesnikov. He will personally answer questions of residents of the region about connection to electric grids.

Read full text: <https://mrsk-cp.ru/>

CHANGES OF KEY INDEXES AND SHARES OF THE COMPANIES



IR-NEWS

- Igor Makovskiy took part in the [All-Russian ESG Forum](#) in Nizhny Novgorod
- On decisions taken by the governing bodies of [Rosseti Centre](#) and [Rosseti Centre and Volga region](#)
- Financial statements of [Rosseti Centre](#) and [Rosseti Centre and Volga region](#) under IFRS for 9M 2022 published

Rosseti Centre, PJSC

119017, Moscow, Malaya Ordynka St., 15

Corporate Governance Department

+7 (495) 747 92 92, ext. 33-34

ir@mrsk-1.ru

<http://www.mrsk-1.ru/en/investors/>



World indexes	Value	Change	
		per day	fr 31.12.21
MOEX Russia	2 196,24	-0,55%	-42,01%
S&P 500	3 941,26	-1,44%	-17,31%
FTSE 100	7 521,39	-0,61%	1,85%
Nikkei	27 885,87	0,24%	-3,15%
Sensex	62 626,36	-0,33%	7,51%
CSI300	3 968,20	0,54%	-19,68%
Bovespa	110 188,57	0,72%	5,12%

Source: MOEX, Company calculations

Currency rates	Value	Change	
		per day	fr 31.12.21
USD/RUB	62,1849	0,66%	-16,30%
EURO/RUB	65,5205	0,82%	-22,06%

Source: Central Bank of Russia, Company calculations

Liquidity of shares	Rosseti Centre	Rosseti Centre & Volga Reg
Number of deals, pcs	957	2 037
Trading volume, ₺ mln	4,9	39,5
Trading volume, mln pcs	17,1	179,2
Average trading volume over the last 30 days, mln pcs	32,5	108,7
% of the share capital	0,04%	0,16%

Source: MOEX, Company calculations

Shares	Price*, ₺	MCap, ₺ bln	MCap, \$ mln
Rosseti Centre	0,2884	12,18	195,80
Rosseti Centre and Volga region	0,2202	24,82	399,07

Source: MOEX, Company calculations

Comparison with indexes	Change	
	per day	fr 31.12.21
STOXX 600 Utilities	-0,21%	-8,30%
MoexEU	-0,81%	-28,49%
Rosseti Centre*	0,07%	-30,07%
Rosseti Centre and Volga region*	0,82%	-4,55%

Source: MOEX, Company calculations

Grid companies	Change*	
	per day	fr 31.12.21
Rosseti	-0,65%	-48,91%
Rosseti FGC UES	-0,72%	-47,17%
Rosseti Volga	-4,27%	-48,09%
Rosseti Moscow Region	0,32%	-24,24%
Rosseti Northern Caucasus	0,59%	-61,92%
Rosseti North-West	-0,21%	-53,44%
Rosseti Ural	-0,23%	-1,93%
Rosseti Siberia	-1,01%	-29,89%
Rosseti South	-0,45%	-27,13%
Rosseti Lenenergo	-1,86%	-18,26%
Rosseti Tomsk	0,34%	-18,56%
Rosseti Kuban	-0,60%	0,15%

Source: MOEX, Company calculations

* - at the market price at MOEX

ickers

Moscow Exchange (MOEX)

Bloomberg

Reuters

[MRKC](#)

[MRKC.RM](#)

[MRKC.MM](#)