

## ELECTRIC POWER INDUSTRY NEWS

### Rules for placement of electric car chargers in Moscow have been updated

New rules for placement of charging infrastructure for electric cars have been updated in Moscow. Now, during the construction and reconstruction of city facilities, the number of required electric charging stations (ECS) will be approved in advance. This was reported on Monday, 19 August, by the press service of the transport complex of the capital's government.

According to the new rules approved by the Moscow government, developers will have to equip 5% of parking spaces with ECS; another 25-100% of parking spaces will need to have cable lines connected so that they can be connected to charging stations in the future.

Read full text: <https://eprussia.ru/>

## COMPANY NEWS

### Putin awarded Rosseti Centre's employees from regions bordering Ukraine

Russian President Vladimir Putin awarded a number of Rosseti Centre's employees from regions bordering Ukraine with a Certificate of Honour for their dedicated work, according to an order signed by the head of the state.

In addition, a number of Rosseti Centre's employees from the Kursk, Bryansk, Belgorod and Voronezh regions received gratitude from the President of the Russian Federation.

Read full text: <https://ria.ru/>

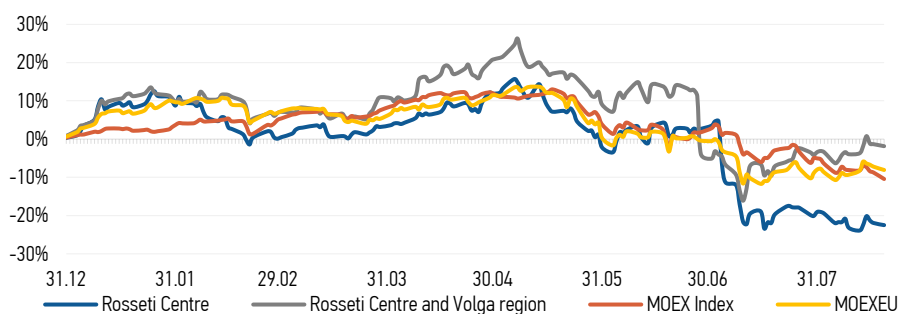
### Ryazan power engineers urge hunters to observe electrical safety rules

In connection with the start of the hunting season, the Ryazanenergo branch reminds hunters of precautionary measures near power facilities.

It is unacceptable to shoot at insulators, information signs and other elements of overhead power lines. Such actions can lead to emergency power outages and cause electrical injuries to people.

Read full text: <https://mrsk-cp.ru/>

## CHANGES OF KEY INDEXES AND SHARES OF THE COMPANIES



## IR-NEWS

- Financial statements of [Rosseti Centre](#) and [Rosseti Centre and Volga region](#) under RAS for 6M 2024 published
- [Rosseti Centre](#) and [Rosseti Centre and Volga region](#) published integrated annual reports for 2023
- [Rosseti Centre, PJSC](#) – managing organization of [Rosseti Centre and Volga region, PJSC](#) published a presentation on the companies' performance results for 3 months of 2024

### Rosseti Centre, PJSC

119017, Moscow, Malaya Ordynka St., 15

### Corporate Governance Department

+7 (495) 747 92 92, ext. 33-34

ir@mrsk-1.ru

<http://www.mrsk-1.ru/en/investors/>



## Tickers

Moscow Exchange (MOEX)

[MRKC](#)

Bloomberg

[MRKC.MM](#)

Reuters

[MRKC.MM](#)

World indexes	Value	Change	
		per day	fr 31.12.23
MOEX Russia	2 775,64	-1,86%	-10,44%
S&P 500	5 608,25	0,97%	46,46%
FTSE 100	8 356,94	0,55%	12,15%
Nikkei	37 388,62	-1,77%	44,80%
Sensex	80 424,68	-0,02%	32,19%
CSI300	3 356,97	0,34%	-12,96%
Bovespa	135 778,00	1,36%	28,90%

Source: MOEX, Company calculations

Currency rates	Value	Change	
		per day	fr 31.12.23
USD/RUB	88,9062	0,00%	-1,55%
EURO/RUB	97,8390	0,00%	-2,70%

Source: Central Bank of Russia, Company calculations

Liquidity of shares	Rosseti Centre & Volga Reg	
	Rosseti Centre	Rosseti Centre & Volga Reg
Number of deals, pcs	2 028	965
Trading volume, P mln	22,7	21,8
Trading volume, mln pcs	52,2	72,0
Average trading volume over the last 30 days, mln pcs	71,6	141,3
% of the share capital	0,12%	0,06%

Source: MOEX, Company calculations

Shares	Price*, P	MCap, P bln	MCap, \$ mln
Rosseti Centre	0,4360	18,41	207,04
Rosseti Centre and Volga region	0,3026	34,10	383,58

Source: MOEX, Company calculations

Comparison with indexes	Change	
	per day	fr 31.12.23
STOXX 600 Utilities	0,77%	7,96%
MoexEU	-0,94%	-8,08%
Rosseti Centre*	-0,73%	-22,50%
Rosseti Centre and Volga region*	-0,53%	-1,85%

Source: MOEX, Company calculations

Grid companies	Change*	
	per day	fr 31.12.23
Rosseti	-0,93%	-8,09%
Rosseti Volga	-1,56%	8,39%
Rosseti Moscow Region	-0,38%	-6,46%
Rosseti Northern Caucasus	-0,68%	-15,28%
Rosseti North-West	-0,39%	-14,13%
Rosseti Ural	-1,59%	10,81%
Rosseti Siberia	-2,60%	-13,86%
Rosseti South	-2,60%	6,76%
Rosseti Lenenergo	-2,39%	-12,65%
Rosseti Tomsk	0,25%	16,52%
Rosseti Kuban	-0,97%	-1,92%

Source: MOEX, Company calculations

\* - at the market price at MOEX