

DAILY MARKET REVIEW

ELECTRIC POWER INDUSTRY NEWS

During the "pilot" on demand management, the volume of managed resources increased 20 times - from 48 MW to 963 MW

During the pilot project on aggregated demand management from the 3rd quarter of 2019, following the selection for the 3rd quarter of 2021, the volume of demand management resources increased 20 times - from 48 MW to 963 MW, said Director for Energy Markets and External Relations of JSC SO UES Andrey Kataev during an online briefing on 14 July.

Read full text: <https://www.bigpowernews.ru/markets/>

COMPANY NEWS

Yaroslavl power engineers discovered a mining farm in the Rybinsky district

In the garage-building cooperative of the settlement of Sudoverf in the Rybinsky district, specialists of the inspection control group of the security department, together with employees of the Rybinsky Distribution Zone of the Yarenergo branch, discovered a garage box in which the "farm" for cryptocurrency mining was located. At the same time, the connection to the branch's power grids was carried out illegally, without concluding a power supply agreement with the supplier of last resort.

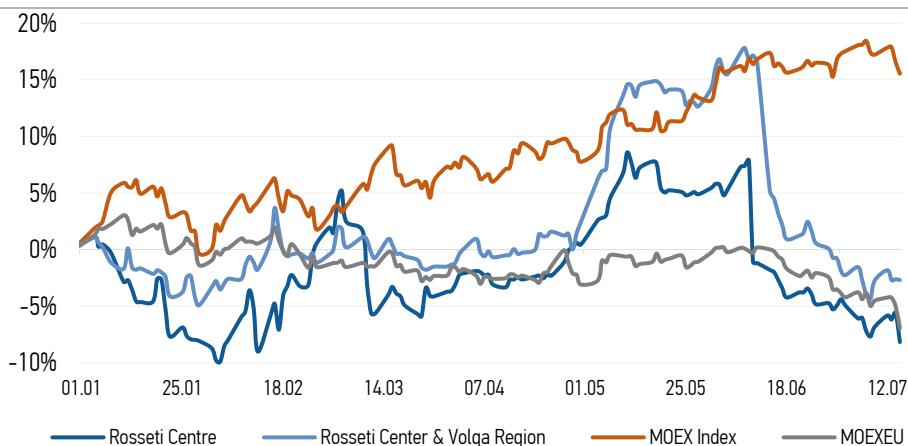
Read full text: <https://www.mrsk-1.ru/press-center/news/>

Ryazanenergo implements large projects aimed at the socio-economic development of the region

For 6 months of 2021, the branch concluded 1,457 contracts for connection to power grids with a capacity of more than 33.9 MW.

Read full text: https://mrsk-cp.ru/press/company_news/

CHANGES OF KEY INDEXES AND SHARES OF THE COMPANIES



IR-NEWS

- Annual General Meeting of Shareholders of [Rosseti Centre](#) and [Rosseti Center and Volga Region](#)
- [Rosseti Centre](#) - managing organization of Rosseti Center and Volga Region held a conference call and webcast dedicated to the consolidated performance results of the Companies for 3 months of 2021
- [Rosseti Centre](#) and [Rosseti Center and Volga Region](#) published its unaudited interim condensed consolidated financial statements for 3 months of 2021

IDGC of Centre, PJSC

119017, Moscow, Malaya Ordynka St., 15

Corporate Governance Department

+7 (495) 747 92 92, ext. 33-34

ir@mrsk-1.ru

<http://www.mrsk-1.ru/en/investors/>



World indexes	Value	Change	
		per day	fr 31.12.20
MOEX Russia	3 799,97	-0,86%	15,54%
S&P 500	4 360,03	-0,33%	16,08%
FTSE 100	7 012,02	-1,12%	6,96%
Nikkei	28 279,09	-1,15%	3,04%
Sensex	53 158,85	0,48%	11,32%
CSI300	5 151,46	1,35%	-1,15%
Bovespa	127 467,90	-0,73%	7,10%

Source: MOEX, Company calculations

Currency rates	Value	Change	
		per day	fr 31.12.20
USD/RUB	74,1236	0,09%	0,34%
EURO/RUB	87,3917	-0,44%	-3,63%

Source: Central Bank of Russia, Company calculations

Liquidity of shares	Rosseti Centre	Rosseti Center & Volga Reg
Number of deals, pcs	2 668	818
Trading volume, ₺ mln	21,7	21,1
Trading volume, mln pcs	58,9	86,1
Average trading volume over the last 30 days, mln pcs	49,0	134,8
% of the share capital	0,14%	0,08%

Source: MOEX, Company calculations

Shares	Price*, ₺	MCap, ₺ bln	MCap, \$ mln
Rosseti Centre	0,3684	15,55	209,83
Rosseti Center & Volga Region	0,2453	27,64	372,96

Source: MOEX, Company calculations

Comparison with indexes	Change	
	per day	fr 31.12.20
STOXX 600 Utilities	-1,04%	-1,62%
MoexEU	-2,02%	-6,93%
Rosseti Centre*	-2,69%	-8,18%
Rosseti Center & Volga Region*	-0,08%	-2,70%

Source: MOEX, Company calculations

Grid companies	Change*	
	per day	fr 31.12.20
Rosseti	-1,91%	-25,19%
Rosseti FGC UES	-7,09%	-4,78%
Rosseti Volga	-0,09%	-14,36%
Rosseti Moscow Region	0,25%	-15,25%
Rosseti Northern Caucasus	-0,36%	-7,00%
Rosseti North-West	-1,22%	-10,86%
Rosseti Ural	0,00%	-11,50%
Rosseti Siberia	-0,17%	-21,77%
Rosseti South	-0,88%	-7,60%
Rosseti Lenenergo	0,00%	18,16%
Rosseti Tomsk	0,00%	-3,38%
Rosseti Kuban	0,00%	0,15%

Source: MOEX, Company calculations

* - at the market price at MOEX

Tickers

Moscow Exchange (MOEX)

Bloomberg

Reuters

MRKC

MRKC.RM

MRKC.MM