

DAILY MARKET REVIEW

ELECTRIC POWER INDUSTRY NEWS

TNS energo applied to the Bank of Russia with a request to verify the fact of stock manipulation

PJSC TNS energo Group of Companies applied to the Bank of Russia and Moscow Exchange to conduct an audit for possible manipulation of shares of six subsidiaries. According to TNS energo Group of Companies, the growth of shares of PJSC TNS energo Kuban, PJSC TNS energo Voronezh, PJSC TNS energo Rostov-on-Don, PJSC TNS energo Nizhny Novgorod, PJSC TNS energo Mari El, PJSC TNS energo Yaroslavl cannot be explained by fundamental factors, or by companies publishing information about significant corporate events.

Read full text: <http://www.energyland.info/>

COMPANY NEWS

Tverenergo's specialists conducted an emergency training to restore power supply

The Tver branch of Rosseti Centre continues to prepare the power grid complex for passing the winter maximum temperatures. To test the readiness to ensure reliable power supply to consumers under any external conditions and to practice actions in emergency situations related to bad weather, Tverenergo's power engineers conducted another sudden emergency training.

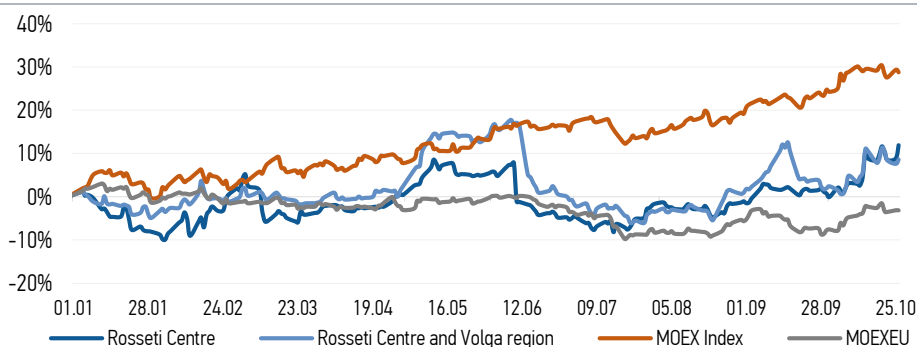
Read full text: <https://www.afanasy.biz/news/>

Marienergo held exercises to practice actions in adverse weather conditions

The branch of Rosseti Centre and Volga region, PJSC - Marienergo, together with the Main Directorate of the Ministry of Emergency Situations of the Russian Federation in the Republic of Mari El, municipal administrations, executive authorities of the Republic of Mari El and territorial grid companies, held command and staff exercises.

Read full text: https://www.mrsk-cp.ru/press/company_news

CHANGES OF KEY INDEXES AND SHARES OF THE COMPANIES



IR-NEWS

- [Rosseti Centre - managing organization of Rosseti Centre and Volga region held a conference call and webcast on the results for 6 months of 2021](#)
- [Rosseti Centre](#) and [Rosseti Centre and Volga region](#) published their performance results for 6 months of 2021 under IFRS
- Financial statements of [Rosseti Centre](#) and [Rosseti Centre and Volga region](#) for 1H 2021 under RAS were published

Rosseti Centre, PJSC

119017, Moscow, Malaya Ordynka St., 15

Corporate Governance Department

+7 (495) 747 92 92, ext. 33-34

ir@mrsk-1.ru

<http://www.mrsk-1.ru/en/investors/>



World indexes	Value	Change	
		per day	fr 31.12.20
MOEX Russia	4 235,87	-0,45%	28,79%
S&P 500	4 574,79	0,18%	21,80%
FTSE 100	7 277,62	0,76%	11,01%
Nikkei	29 106,01	1,77%	6,06%
Sensex	61 350,26	0,63%	28,48%
CSI300	4 963,10	-0,33%	-4,76%
Bovespa	106 419,50	-2,11%	-10,58%

Source: MOEX, Company calculations

Currency rates	Value	Change	
		per day	fr 31.12.20
USD/RUB	70,1345	-1,03%	-5,06%
EURO/RUB	81,7418	-0,92%	-9,86%

Source: Central Bank of Russia, Company calculations

Liquidity of shares	Rosseti Centre & Volga Reg	
	Rosseti Centre	Rosseti Centre & Volga Reg
Number of deals, pcs	2 172	676
Trading volume, P mln	27,1	14,2
Trading volume, mln pcs	60,3	51,9
Average trading volume over the last 30 days, mln pcs	30,4	95,0
% of the share capital	0,14%	0,05%

Source: MOEX, Company calculations

Shares	Price*, P	MCap, P bln	MCap, \$ mln
Rosseti Centre	0,4490	18,96	270,28
Rosseti Centre and Volga region	0,2738	30,86	439,96

Source: MOEX, Company calculations

Comparison with indexes	Change	
	per day	fr 31.12.20
STOXX 600 Utilities	1,15%	0,55%
MoexEU	-0,03%	-3,17%
Rosseti Centre*	2,79%	11,91%
Rosseti Centre and Volga region*	0,92%	8,61%

Source: MOEX, Company calculations

Grid companies	Change*	
	per day	fr 31.12.20
Rosseti	0,42%	-19,88%
Rosseti FGC UES	0,00%	-13,98%
Rosseti Volga	1,73%	-9,20%
Rosseti Moscow Region	4,08%	6,95%
Rosseti Northern Caucasus	-0,33%	1,97%
Rosseti North-West	1,76%	11,78%
Rosseti Ural	2,04%	17,31%
Rosseti Siberia	-0,77%	50,85%
Rosseti South	-0,65%	9,65%
Rosseti Lenenergo	15,04%	123,71%
Rosseti Tomska	-2,22%	2,86%
Rosseti Kuban	1,67%	7,82%

Source: MOEX, Company calculations

* - at the market price at MOEX

Tickers

Moscow Exchange (MOEX)

Bloomberg

Reuters

MRKC

MRKC.RM

MRKC.MM