

ELECTRIC POWER INDUSTRY NEWS

Rosseti reduced the number of failures during the New Year holidays by 25%

During the New Year holidays of 2025, the number of technological failures in the power grids decreased by 25% compared to the same periods in 2023-2024, the press service of Rosseti reported. The company's power engineers recorded and eliminated the failures, which were mainly caused by unfavourable weather conditions. The occurrence of emergency situations was influenced by freezing rain, wet snow and strong wind.

Read full text: <https://eprussia.ru/>

COMPANY NEWS

Rosseti Centre electrified socially significant facilities in Belgorod

Power engineers completed work on grid connection of healthcare facilities: two clinics in Belgorod and the Regional Centre for Rehabilitation of the Disabled in Tula. Belgorodenergo's specialists connected Children's Polyclinic No. 3 under construction to the power grid. To supply 491 kW of power, they laid cable lines and installed a package transformer substation with modern domestic equipment. The opening of the institution is scheduled for the first half of 2025. Both pediatricians and specialists will be available here.

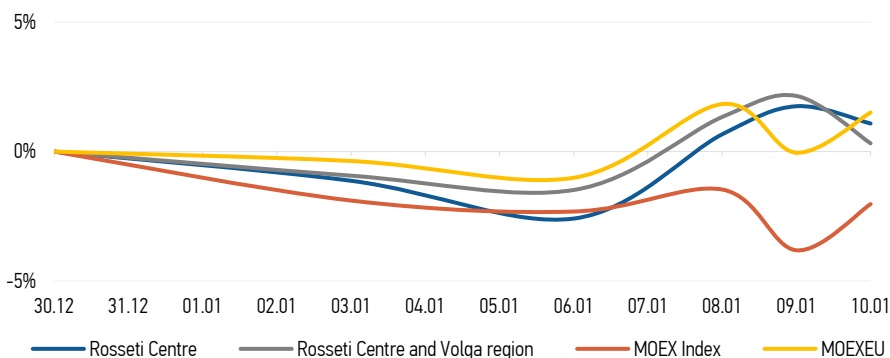
Read full text: <https://vremya31.ru/>

Brighter and safer: Udmurtenergo's power engineers installed lighting for a ski trail in the settlement of Yar

Rosseti Centre and Rosseti Centre and Volga region continue to work on upgrading street lighting in the regions of responsibility. The companies' specialists installed thousands of new energy-efficient lighting fixtures that improve the safety and comfort of residents of the Udmurt Republic, Belgorod, Ivanovo and Yaroslavl regions, reports Rosseti Centre's TG channel.

Read full text: <https://mrsk-cp.ru/>

CHANGES OF KEY INDEXES AND SHARES OF THE COMPANIES



IR-NEWS

- Boris Ebzeev headed [Rosseti Centre](#) – managing organization of [Rosseti Centre and Volga region](#)
- [Rosseti Centre](#) – managing organization of [Rosseti Centre and Volga region](#) published a presentation on the results of operations of the companies for 9 months of 2024 under IFRS
- [Rosseti Centre and Rosseti Centre and Volga region](#) assigned the highest non-financial reporting rating

Rosseti Centre, PJSC

119017, Moscow, Malaya Ordynka St., 15

Corporate Governance Department

+7 (495) 747 92 92, ext. 33-34

ir@mrsk-1.ru

<http://www.mrsk-1.ru/en/investors/>



Tickers

Moscow Exchange (MOEX)

Bloomberg

Reuters

[MRKC](#)

[MRKC.RM](#)

[MRKC.MM](#)

| World indexes | Value | Change | |
|---------------|------------|---------|-------------|
| | | per day | fr 31.12.24 |
| MOEX Russia | 2 824,59 | 1,86% | -2,03% |
| S&P 500 | 5 827,04 | -1,10% | -1,35% |
| FTSE 100 | 8 248,49 | -0,86% | 1,57% |
| Nikkei | 39 190,40 | -1,05% | -1,77% |
| Sensex | 77 378,91 | -0,31% | -1,11% |
| CSI300 | 3 732,48 | -1,25% | -6,67% |
| Bovespa | 118 856,48 | -0,77% | -1,19% |

Source: MOEX, Company calculations

| Currency rates | Value | Change | |
|----------------|----------|---------|-------------|
| | | per day | fr 31.12.24 |
| USD/RUB | 102,2911 | 0,60% | 0,60% |
| EURO/RUB | 105,0893 | -0,96% | -0,96% |

Source: Central Bank of Russia, Company calculations

| Liquidity of shares | Rosseti Centre | Rosseti Centre & Volga Reg |
|---|----------------|----------------------------|
| Number of deals, pcs | 3 740 | 1 226 |
| Trading volume, P mln | 26,7 | 19,5 |
| Trading volume, mln pcs | 55,0 | 56,6 |
| Average trading volume over the last 30 days, mln pcs | 53,3 | 87,4 |
| % of the share capital | 0,13% | 0,05% |

Source: MOEX, Company calculations

| Shares | Price*, P | MCap, P bln | MCap, \$ mln |
|---------------------------------|-----------|-------------|--------------|
| Rosseti Centre | 0,4844 | 20,45 | 199,92 |
| Rosseti Centre and Volga region | 0,3451 | 38,89 | 380,21 |

Source: MOEX, Company calculations

| Comparison with indexes | Change | |
|----------------------------------|---------|-------------|
| | per day | fr 31.12.24 |
| STOXX 600 Utilities | -2,32% | -1,90% |
| MoexEU | 1,55% | 1,51% |
| Rosseti Centre* | -0,66% | 1,09% |
| Rosseti Centre and Volga region* | -1,79% | 0,32% |

Source: MOEX, Company calculations

| Grid companies | Change* | |
|---------------------------|---------|-------------|
| | per day | fr 31.12.24 |
| Rosseti | -0,92% | 0,39% |
| Rosseti Volga | -1,87% | 5,72% |
| Rosseti Moscow Region | -1,39% | 3,17% |
| Rosseti Northern Caucasus | -2,54% | 7,68% |
| Rosseti North-West | -4,47% | 15,62% |
| Rosseti Ural | -5,05% | 12,10% |
| Rosseti Siberia | -1,29% | 6,36% |
| Rosseti South | -4,15% | 18,65% |
| Rosseti Lenenergo | -0,89% | 5,71% |
| Rosseti Tomsk | -3,14% | 8,83% |

Source: MOEX, Company calculations

* - at the market price at MOEX