

# DAILY MARKET REVIEW

## ELECTRIC POWER INDUSTRY NEWS

### Mishustin compared the heat with frost in terms of the load on the power supply system

The heat creates a tense situation in the field of energy supply, the load on the power grid companies at this time is comparable to the winter period. This was stated by the Prime Minister of the Russian Federation Mikhail Mishustin at a meeting with Director General of Rosseti Andrey Ryumin.

Read full text: <https://tass.ru/>

## COMPANY NEWS

### Kostromaenergo's employee Andrey Mozokhin took part in the International Scientific and Technical Conference "Intelligent Information Technologies and Intelligent Business (INFOS-2021)"

Andrey Mozokhin, Leading Engineer of the automated systems operation department of the branch "Rosseti Centre Kostromaenergo", spoke as a speaker in the team of young specialists from subsidiaries and affiliates of PJSC Rosseti participating in the competition "Youth Forecast of Global Energy Development".

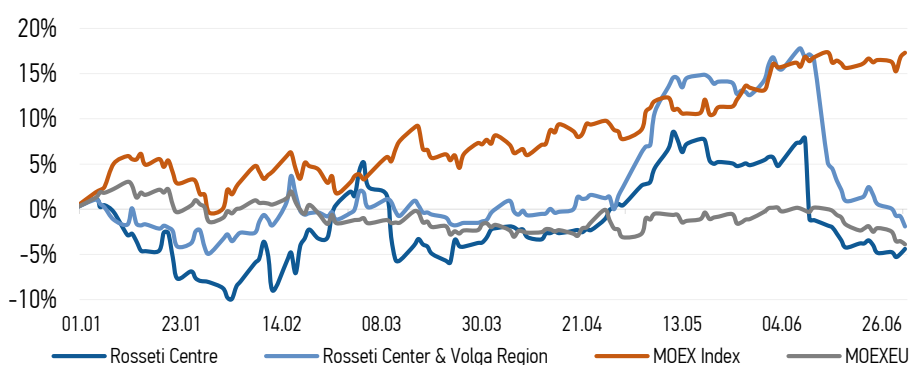
Read full text: <https://www.mrsk-1.ru/press-center/news/>

### Students of specialized universities comprehend the profession of a power engineer in the Kalugaenergo branch

14 people from Kalugaenergo's construction crews get acquainted with the profession of a power engineer at facilities of "Rosseti Center and Volga Region Kalugaenergo". The student crews "Energy Kaluga" of the Orel State Agrarian University named after N.V. Parakhin, "Energy-Obninsk" of the National Research Nuclear University "MEPhI" began to work at the facilities of the power grid complex.

Read full text: [https://mrsk-cp.ru/press/company\\_news/](https://mrsk-cp.ru/press/company_news/)

## CHANGES OF KEY INDEXES AND SHARES OF THE COMPANIES



## IR-NEWS

- Annual General Meeting of Shareholders of [Rosseti Centre](#) and [Rosseti Center and Volga Region](#)
- [Rosseti Centre](#) - managing organization of Rosseti Center and Volga Region held a conference call and webcast dedicated to the consolidated performance results of the Companies for 3 months of 2021
- [Rosseti Centre](#) and [Rosseti Center and Volga Region](#) published its unaudited interim condensed consolidated financial statements for 3 months of 2021

## IDGC of Centre, PJSC

119017, Moscow, Malaya Ordynka St., 15

Corporate Governance Department

+7 (495) 747 92 92, ext. 33-34

ir@mrsk-1.ru

<http://www.mrsk-1.ru/en/investors/>



World indexes	Value	Change	
		per day	fr 31.12.20
MOEX Russia	3 858,32	0,43%	17,31%
S&P 500	4 319,94	0,52%	15,01%
FTSE 100	7 125,16	1,25%	8,68%
Nikkei	28 707,04	-0,29%	4,60%
Sensex	52 318,60	-0,31%	9,56%
CSI300	5 229,66	0,11%	0,35%
Bovespa	125 666,20	-0,90%	5,59%

Source: MOEX, Company calculations

Currency rates	Value	Change	
		per day	fr 31.12.20
USD/RUB	72,7234	0,49%	-1,56%
EURO/RUB	86,5118	0,36%	-4,60%

Source: Central Bank of Russia, Company calculations

Liquidity of shares	Rosseti Centre	Rosseti Center & Volga Reg
Number of deals, pcs	752	1 731
Trading volume, ₺ mln	5,6	37,3
Trading volume, mln pcs	14,5	150,8
Average trading volume over the last 30 days, mln pcs	67,1	151,6
% of the share capital	0,03%	0,13%

Source: MOEX, Company calculations

Shares	Price*, ₺	MCap, ₺ bln	MCap, \$ mln
Rosseti Centre	0,3836	16,19	222,69
Rosseti Center & Volga Region	0,2473	27,87	383,24

Source: MOEX, Company calculations

Comparison with indexes	Change	
	per day	fr 31.12.20
STOXX 600 Utilities	0,93%	-1,98%
MoexEU	-0,37%	-3,88%
Rosseti Centre*	0,58%	-4,39%
Rosseti Center & Volga Region*	-1,12%	-1,90%

Source: MOEX, Company calculations

Grid companies	Change*	
	per day	fr 31.12.20
Rosseti	0,04%	-23,97%
Rosseti FGC UES	1,06%	-0,12%
Rosseti Volga	0,17%	-12,15%
Rosseti Moscow Region	2,05%	-14,32%
Rosseti Northern Caucasus	4,03%	-1,83%
Rosseti North-West	0,41%	-9,20%
Rosseti Ural	3,59%	-3,71%
Rosseti Siberia	-0,16%	-19,82%
Rosseti South	-0,11%	-5,75%
Rosseti Lenenergo	0,49%	18,55%
Rosseti Tomsk	0,00%	-3,38%
Rosseti Kuban	0,00%	0,74%

Source: MOEX, Company calculations

\* - at the market price at MOEX

## Tickers

Moscow Exchange (MOEX)

Bloomberg

Reuters

MRKC

MRKC.RM

MRKC.MM