

**ELECTRIC POWER INDUSTRY NEWS**
**Igor Makovskiy: Russian power engineers are always at the forefront of solving the problems of the state**

In the Levoberezhny district of the city of Mariupol, the first shift of the rapid deployment group of power engineers of Rosseti Centre and Rosseti Centre and Volga region has completed its work.

Read full text: <https://www.kommersant.ru/>

**COMPANY NEWS**
**The branch of Rosseti Centre – Orelenergo brought the level of import substitution to almost 90%**

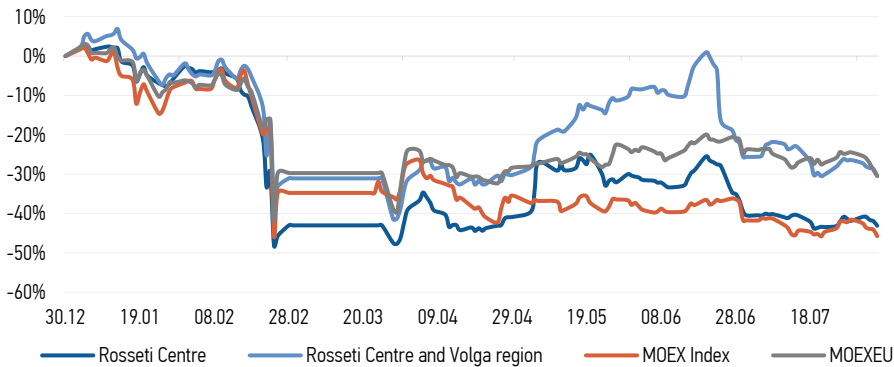
Vladimir Bobrovsky, head of the department for technological development and digitalization of the branch of Rosseti Centre, PJSC – Orelenergo, told reporters about this during a press tour of power industry facilities.

Read full text: <https://www.infoorel.ru/>

**Udmurtenergo connected a cultural and sports complex in the Grakhovsky district to the company's grids**

Power engineers of the branch of Rosseti Centre and Volga region, PJSC – Udmurtenergo completed the grid connection of the cultural and sports complex in the village of Staraya Igra of the Grakhovsky district in the Udmurt Republic.

Read full text: <https://mrsk-cp.ru/>

**CHANGES OF KEY INDEXES AND SHARES OF THE COMPANIES**

**IR-NEWS**

- Financial statements of [Rosseti Centre](#) and [Rosseti Centre and Volga region](#) under RAS for 1H 2022 published
- [Integrated annual reports](#) of Rosseti Centre, PJSC and Rosseti Centre and Volga region, PJSC for 2021 published
- Annual General Meetings of Shareholders of [Rosseti Centre](#) and [Rosseti Centre and Volga region](#) held

**Rosseti Centre, PJSC**

119017, Moscow, Malaya Ordynka St., 15

**Corporate Governance Department**

+7 (495) 747 92 92, ext. 33-34

ir@mrsk-1.ru

<http://www.mrsk-1.ru/en/investors/>



World indexes	Value	Change	
		per day	fr 31.12.21
MOEX Russia	2 054,29	-2,94%	-45,76%
S&P 500	4 145,19	-0,16%	-13,03%
FTSE 100	7 439,74	-0,11%	0,75%
Nikkei	28 175,87	0,87%	-2,14%
Sensex	58 387,93	0,00%	0,23%
CSI300	4 156,91	1,35%	-15,86%
Bovespa	106 471,92	0,55%	1,57%

Source: MOEX, Company calculations

Currency rates	Value	Change	
		per day	fr 31.12.21
USD/RUB	60,2580	0,03%	-18,89%
EURO/RUB	61,0872	-0,06%	-27,34%

Source: Central Bank of Russia, Company calculations

Liquidity of shares	Rosseti Centre	Rosseti Centre & Volga Reg
Number of deals, pcs	977	1 111
Trading volume, P mln	6,4	14,8
Trading volume, mln pcs	27,4	92,0
Average trading volume over the last 30 days, mln pcs	42,9	82,5
% of the share capital	0,06%	0,08%

Source: MOEX, Company calculations

Shares	Price*, P	MCap, P bln	MCap, \$ mln
Rosseti Centre	0,2346	9,90	164,37
Rosseti Centre and Volga region	0,1604	18,08	299,99

Source: MOEX, Company calculations

Comparison with indexes	Change	
	per day	fr 31.12.21
STOXX 600 Utilities	-0,41%	-7,14%
MoexEU	-2,12%	-30,47%
Rosseti Centre*	-2,01%	-43,11%
Rosseti Centre and Volga region*	-2,55%	-30,47%

Source: MOEX, Company calculations

Grid companies	Change*	
	per day	fr 31.12.21
Rosseti	-2,86%	-44,93%
Rosseti FGC UES	-2,82%	-43,32%
Rosseti Volga	-5,50%	-42,96%
Rosseti Moscow Region	-0,06%	-30,10%
Rosseti Northern Caucasus	-1,45%	-64,46%
Rosseti North-West	-0,92%	-47,82%
Rosseti Ural	-1,84%	-15,63%
Rosseti Siberia	-0,56%	-22,99%
Rosseti South	-0,32%	-31,78%
Rosseti Lenenergo	-1,83%	-23,27%
Rosseti Tomsk	-0,39%	-29,09%
Rosseti Kuban	-0,17%	-12,48%

Source: MOEX, Company calculations

\* - at the market price at MOEX

**Tickers**

Moscow Exchange (MOEX)

[MRKC](#)

Bloomberg

[MRKC RM](#)

Reuters

[MRKC.MM](#)