

DAILY MARKET REVIEW

ELECTRIC POWER INDUSTRY NEWS

The Government lowered the target for the minimum growth of electricity consumption in the UES of the Russian Federation by 2024 from 6 to 4%

The Russian government reduced the target for the growth of electricity consumption in the unified energy system (UES) of Russia by 2024 compared to 2018 from 6 to 4%, follows from the order published on the official portal of legal information. Changes were made to the Comprehensive Plan for the modernization and expansion of the backbone infrastructure of the Russian Federation for the period up to 2024.

Read full text: <https://eminent.1prime.ru/News/>

COMPANY NEWS

Lipetskenergo to invest more than 1.4 billion rubles in development of the power grid complex in 2021

The branch "Rosseti Centre Lipetskenergo" outlined the main areas of investment activity for 2021. The branch will allocate over 1.43 billion rubles for technical re-equipment and reconstruction, construction of new, expansion and acquisition of existing facilities. The implementation of the planned measures will result in the commissioning of about 10 MVA of capacity and 161 km of power lines.

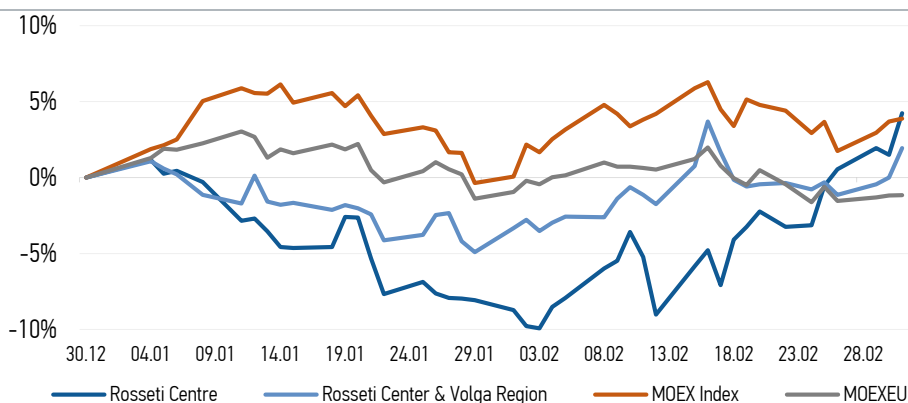
Read full text: <https://www.mrsk-1.ru/press-center/news/>

Power engineers of Vladimirenergo revealed the theft of electricity for 19.11 million rubles in 2020

Power engineers of "Rosseti Center and Volga Region Vladimirenergo" systematically work to reduce commercial electricity losses. So, in 2020, the specialists of the energy company recorded 263 cases of non-metered and non-contractual energy consumption. The total theft was 5.12 million kWh for the amount of 19.11 million rubles.

Read full text: https://www.mrsk-cp.ru/press/company_news/

CHANGES OF KEY INDEXES AND SHARES OF THE COMPANIES



IR-NEWS

25 February 2021 Financial statements of [Rosseti Centre](#) and [Rosseti Center and Volga Region](#) for 2020 under RAS were published

29 December 2020 A meeting of the Board of Directors of [Rosseti Centre](#) and [Rosseti Center and Volga Region](#) was held, which approved the Company's Business Plan for 2021 and forecast indicators for 2022-2025

| World indexes | Value | Change | |
|---------------|------------|---------|-------------|
| | | per day | fr 31.12.20 |
| MOEX Russia | 3 416,04 | 0,17% | 3,86% |
| S&P 500 | 3 819,72 | -1,31% | 1,69% |
| FTSE 100 | 6 675,47 | 0,93% | 1,83% |
| Nikkei | 29 559,10 | 0,51% | 7,71% |
| Sensex | 51 444,65 | 2,28% | 7,73% |
| CSI300 | 5 452,21 | 1,92% | 4,62% |
| Bovespa | 111 184,00 | -0,32% | -6,58% |

Source: MOEX, Company calculations

| Currency rates | Value | Change | |
|----------------|---------|---------|-------------|
| | | per day | fr 31.12.20 |
| USD/RUB | 74,5755 | 0,72% | 0,95% |
| EURO/RUB | 89,5652 | 0,13% | -1,23% |

Source: Central Bank of Russia, Company calculations

| Liquidity of shares | Rosseti Centre | Rosseti Center & Volga Reg |
|---|----------------|----------------------------|
| Number of deals, pcs | 1 767 | 774 |
| Trading volume, ₺ mln | 28,8 | 35,4 |
| Trading volume, mln pcs | 68,8 | 137,7 |
| Average trading volume over the last 30 days, mln pcs | 41,2 | 84,7 |
| % of the share capital | 0,16% | 0,12% |

Source: MOEX, Company calculations

| Shares | Price*, ₺ | MCap, ₺ bln | MCap, \$ mln |
|-------------------------------|-----------|-------------|--------------|
| Rosseti Centre | 0,4182 | 17,66 | 236,75 |
| Rosseti Center & Volga Region | 0,2570 | 28,96 | 388,38 |

Source: MOEX, Company calculations

| Comparison with indexes | Change | |
|--------------------------------|---------|-------------|
| | per day | fr 31.12.20 |
| STOXX 600 Utilities | -2,63% | -9,33% |
| MoexEU | 0,02% | -1,16% |
| Rosseti Centre* | 2,70% | 4,24% |
| Rosseti Center & Volga Region* | 1,94% | 1,94% |

Source: MOEX, Company calculations

| Grid companies | Change* | |
|---------------------------|---------|-------------|
| | per day | fr 31.12.20 |
| Rosseti | -0,50% | -5,26% |
| Rosseti FGC UES | 0,65% | -3,58% |
| Rosseti Volga | 1,74% | -0,88% |
| Rosseti Moscow Region | 1,91% | -10,35% |
| Rosseti Northern Caucasus | 0,58% | -6,25% |
| Rosseti North-West | 0,27% | 3,13% |
| Rosseti Ural | -0,13% | -2,22% |
| Rosseti Siberia | 0,27% | -4,43% |
| Rosseti South | 0,21% | -3,59% |
| Rosseti Lenenergo | 0,17% | 12,81% |
| Rosseti Tomsk | 0,00% | -5,19% |
| Rosseti Kuban | 0,00% | 5,01% |

Source: MOEX, Company calculations

* - at the market price at MOEX

IDGC of Centre, PJSC

119017, Moscow, Malaya Ordynka St., 15

Corporate Governance Department

+7 (495) 747 92 92, ext. 33-34

ir@mrsk-1.ru

<http://www.mrsk-1.ru/en/investors/>



ickers

Moscow Exchange (MOEX)

Bloomberg

Reuters

MRKC

MRKC.RM

MRKC.MM