

### ELECTRIC POWER INDUSTRY NEWS

#### Construction of 8 hydroelectric power plants with a total cost of almost 1 trillion rubles is planned in the Russian Federation

The Ministry of Energy has prepared a schedule for construction of new HPPs until 2040, which includes eight projects with a total capacity of 4.7 GW and a capital investment of about 961 billion rubles.

Read full text: <https://www.bigpowernews.ru/>

### COMPANY NEWS

#### The Kostromaenergo branch connected the Kostroma cargo port to the power grid

The branch of Rosseti Centre, PJSC – Kostromaenergo provided electricity to JSC Kostroma Freight Port, which resumed its work after a 20-year break.

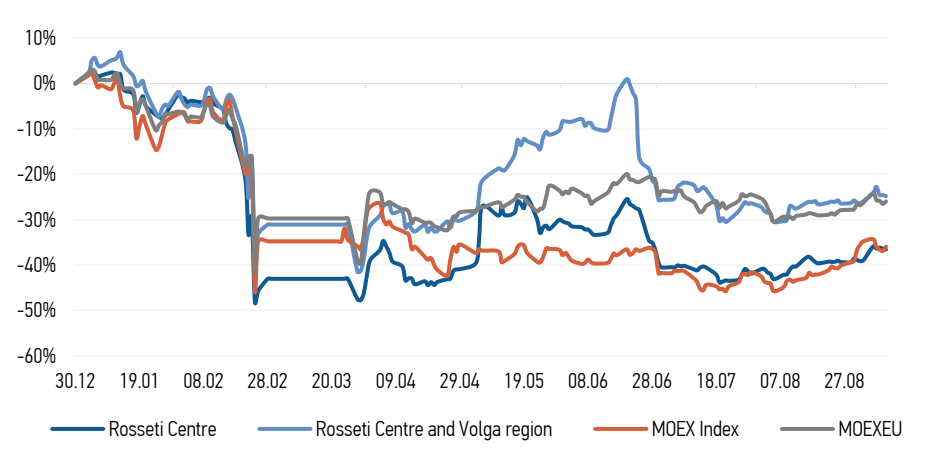
Read full text: <https://k1news.ru/>

#### The Kalugaenergo branch connected a new kindergarten in Meshchovsk to the power grid

As part of the implementation of the project agreement for connection to power grids, the branch of Rosseti Centre and Volga region, PJSC – Kalugaenergo connected a new kindergarten in the city of Meshchovsk to the power grid. The maximum connection power was 230 kW.

Read full text: <https://mrsk-cp.ru/>

### CHANGES OF KEY INDEXES AND SHARES OF THE COMPANIES



### IR-NEWS

- [A company of the Rosseti Group was the first in the energy sector to attract green financing](#) by signing an agreement with Sovcombank
- [Rosseti Centre](#) and [Rosseti Centre and Volga region](#) published performance results for 6 months of 2022 under IFRS
- Financial statements of [Rosseti Centre](#) and [Rosseti Centre and Volga region](#) under RAS for 1H 2022 published

### Rosseti Centre, PJSC

119017, Moscow, Malaya Ordynka St., 15

#### Corporate Governance Department

+7 (495) 747 92 92, ext. 33-34

ir@mrsk-1.ru

<http://www.mrsk-1.ru/en/investors/>



World indexes	Value	Change	
		per day	fr 31.12.21
MOEX Russia	2 426,06	1,50%	-35,94%
S&P 500	4 067,36	2,83%	-14,66%
FTSE 100	7 351,07	1,23%	-0,45%
Nikkei	28 214,75	0,00%	-2,00%
Sensex	59 793,14	0,00%	2,64%
CSI300	4 093,79	0,00%	-17,14%
Bovespa	112 300,41	2,02%	7,13%

Source: MOEX, Company calculations

Currency rates	Value	Change	
		per day	fr 31.12.21
USD/RUB	60,8010	-0,62%	-18,16%
EURO/RUB	60,6952	0,25%	-27,80%

Source: Central Bank of Russia, Company calculations

Liquidity of shares	Rosseti Centre		Rosseti Centre & Volga Reg	
	Value	Change	Value	Change
Number of deals, pcs	622		347	
Trading volume, ₪ mln	3,5		3,2	
Trading volume, mln pcs	13,4		18,7	
Average trading volume over the last 30 days, mln pcs	22,6		40,3	
% of the share capital	0,03%		0,02%	

Source: MOEX, Company calculations

Shares	Price*, ₪	MCap, ₪ bln	MCap, \$ mln
Rosseti Centre	0,2616	11,04	181,65
Rosseti Centre and Volga region	0,1735	19,55	321,59

Source: MOEX, Company calculations

Comparison with indexes	Change	
	per day	fr 31.12.21
STOXX 600 Utilities	0,66%	-9,49%
MoexEU	0,71%	-25,97%
Rosseti Centre*	-0,30%	-36,57%
Rosseti Centre and Volga region*	-0,29%	-24,79%

Source: MOEX, Company calculations

Grid companies	Change*	
	per day	fr 31.12.21
Rosseti	0,30%	-45,59%
Rosseti FGC UES	1,13%	-50,78%
Rosseti Volga	0,67%	-39,74%
Rosseti Moscow Region	-0,37%	-23,19%
Rosseti Northern Caucasus	0,78%	-61,40%
Rosseti North-West	0,53%	-44,63%
Rosseti Ural	-0,25%	-8,61%
Rosseti Siberia	0,00%	-22,13%
Rosseti South	0,15%	-25,03%
Rosseti Lenenergo	0,85%	-14,92%
Rosseti Tomsk	0,38%	-26,32%
Rosseti Kuban	-0,18%	-15,98%

Source: MOEX, Company calculations

\* - at the market price at MOEX

### ickers

Moscow Exchange (MOEX)

Bloomberg

Reuters

[MRKC](#)

[MRKC.RM](#)

[MRKC.MM](#)