

# DAILY MARKET REVIEW

## ELECTRIC POWER INDUSTRY NEWS

### The expert called the real price of electricity for Russians

The current levels of electricity tariffs for the population in Russia are on average 30-50% lower than economically justified, Oleg Kolobov, Deputy Head of the Climate and Green Energy Department of the Centre for Strategic Research, told RIA Novosti.

Read full text: <https://ria.ru/>

## COMPANY NEWS

### Kostromaenergo repairs package transformer substations at bases of Distribution Zones

The branch "Rosseti Centre Kostromaenergo" has started to implement the main part of the 2021 repair program. One of the measures to improve the efficiency of repair activities this year is to increase the volume of preparation (assembly) of package transformer substations at bases of Distribution Zones in winter months for their subsequent replacement at installation sites of old substations requiring repair.

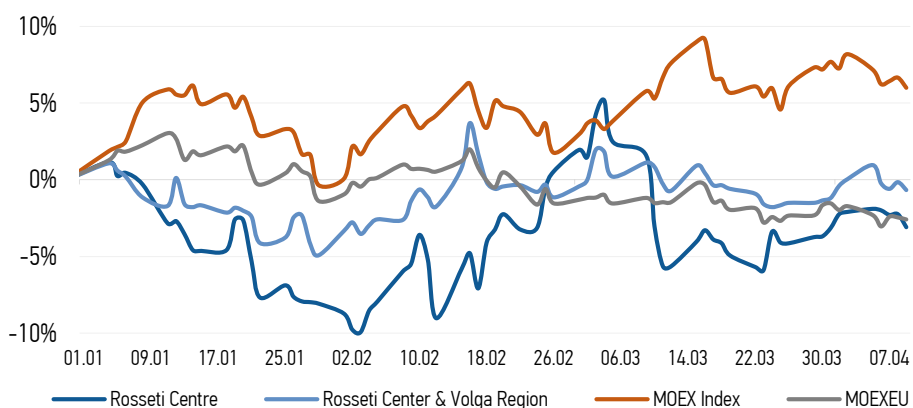
Read full text: <https://www.mrsk-1.ru/press-center/news/>

### Rosseti Center and Volga Region installs modern video surveillance systems at large substations in the Kirov region

Since the beginning of 2021, the Kirov branch of Rosseti Center and Volga Region completed an investment project to implement the Unified Security System at a number of large 110 kV substations. Among the first feeding centres where the project was implemented were the "Tyumen" substation and the "Vakhrushi" substation.

Read full text: [https://mrsk-cp.ru/press/company\\_news/](https://mrsk-cp.ru/press/company_news/)

## CHANGES OF KEY INDEXES AND SHARES OF THE COMPANIES



## IR-NEWS

- [Rosseti Centre and Rosseti Center and Volga Region](#) entered the short-list of the rating of companies by corporate ESG practice
- [Rosseti Centre - managing organization of Rosseti Center and Volga Region](#) held a conference call and webcast dedicated to the consolidated performance results of the Companies for 2020
- Audited consolidated financial results of "[Rosseti Centre](#)" and "[Rosseti Center and Volga Region](#)" for 2020 were published

## IDGC of Centre, PJSC

119017, Moscow, Malaya Ordynka St., 15

Corporate Governance Department

+7 (495) 747 92 92, ext. 33-34

ir@mrsk-1.ru

<http://www.mrsk-1.ru/en/investors/>



World indexes	Value	Change	
		per day	fr 31.12.20
MOEX Russia	3 486,03	-0,62%	5,99%
S&P 500	4 128,80	0,77%	9,92%
FTSE 100	6 929,79	-0,18%	5,70%
Nikkei	29 768,06	0,20%	8,47%
Sensex	49 591,32	-0,31%	3,85%
CSI300	5 035,54	-1,50%	-3,38%
Bovespa	117 669,90	-0,54%	-1,13%

Source: MOEX, Company calculations

Currency rates	Value	Change	
		per day	fr 31.12.20
USD/RUB	77,1011	-0,86%	4,37%
EURO/RUB	91,6192	-0,77%	1,03%

Source: Central Bank of Russia, Company calculations

Liquidity of shares	Rosseti Centre	Rosseti Center & Volga Reg
Number of deals, pcs	540	384
Trading volume, ₺ mln	3,7	8,8
Trading volume, mln pcs	9,5	35,0
Average trading volume over the last 30 days, mln pcs	28,7	62,9
% of the share capital	0,02%	0,03%

Source: MOEX, Company calculations

Shares	Price*, ₺	MCap, ₺ bln	MCap, \$ mln
Rosseti Centre	0,3888	16,41	212,89
Rosseti Center & Volga Region	0,2504	28,22	366,01

Source: MOEX, Company calculations

Comparison with indexes	Change	
	per day	fr 31.12.20
STOXX 600 Utilities	-0,26%	1,58%
MoexEU	-0,14%	-2,59%
Rosseti Centre*	-0,87%	-3,09%
Rosseti Center & Volga Region*	-0,52%	-0,67%

Source: MOEX, Company calculations

Grid companies	Change*	
	per day	fr 31.12.20
Rosseti	-0,32%	-17,68%
Rosseti FGC UES	-0,16%	-5,33%
Rosseti Volga	-0,45%	-3,02%
Rosseti Moscow Region	-0,76%	-16,00%
Rosseti Northern Caucasus	-0,30%	-9,31%
Rosseti North-West	-0,94%	-2,94%
Rosseti Ural	-0,78%	-5,81%
Rosseti Siberia	1,51%	-12,39%
Rosseti South	-0,63%	-3,59%
Rosseti Lenenergo	0,33%	15,30%
Rosseti Tomsk	0,00%	-5,71%
Rosseti Kuban	0,00%	3,39%

Source: MOEX, Company calculations

\* - at the market price at MOEX

## ickers

Moscow Exchange (MOEX)

Bloomberg

Reuters

MRKC

MRKC.RM

MRKC.MM