

## ELECTRIC POWER INDUSTRY NEWS

### Rosseti to provide two electric bus fleets in Moscow with ultra-fast charging stations until the end of the year

By 1 September, the Russian government will have to develop and approve an updated strategy for the development of the automotive industry. Power engineers, in turn, are already preparing the infrastructure for the most modern transport.

Read full text: <https://minenergo.gov.ru/>

## COMPANY NEWS

### Igor Makovskiy opened the VIII Collegium of Rosseti Centre and Rosseti Centre and Volga region in Moscow

Igor Makovskiy, General Director of Rosseti Centre, PJSC - the managing organization of Rosseti Centre and Volga region, PJSC, opened a semi-annual Collegium, which brought together the heads of the Executive Office and branches of the Companies in Moscow.

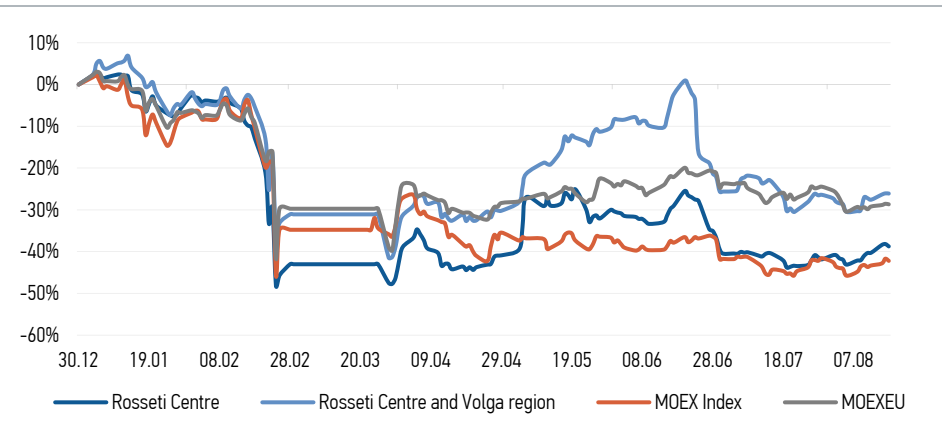
Read full text: <https://www.mrsk-1.ru/>

### A press tour to the digital substation of a new generation "Montazhnaya" took place in the Nizhny Novgorod region

The main topic of the press tour was import substitution in the construction and operation of power grid facilities in the Nizhny Novgorod region.

Read full text: <https://mrsk-cp.ru/>

## CHANGES OF KEY INDEXES AND SHARES OF THE COMPANIES



## IR-NEWS

- Financial statements of [Rosseti Centre](#) and [Rosseti Centre and Volga region](#) under RAS for 1H 2022 published
- [Integrated annual reports](#) of Rosseti Centre, PJSC and Rosseti Centre and Volga region, PJSC for 2021 published
- Annual General Meetings of Shareholders of [Rosseti Centre](#) and [Rosseti Centre and Volga region](#) held

## Rosseti Centre, PJSC

119017, Moscow, Malaya Ordynka St., 15

### Corporate Governance Department

+7 (495) 747 92 92, ext. 33-34

ir@mrsk-1.ru

<http://www.mrsk-1.ru/en/investors/>



World indexes	Value	Change	
		per day	fr 31.12.21
MOEX Russia	2 188,56	-0,90%	-42,21%
S&P 500	4 274,04	-0,72%	-10,33%
FTSE 100	7 515,75	-0,27%	1,78%
Nikkei	29 222,77	1,23%	1,50%
Sensex	60 260,13	0,00%	3,44%
CSI300	4 216,96	0,00%	-14,64%
Bovespa	113 707,76	0,17%	8,48%

Source: MOEX, Company calculations

Currency rates	Value	Change	
		per day	fr 31.12.21
USD/RUB	61,4247	0,08%	-17,32%
EURO/RUB	62,3551	-0,24%	-25,83%

Source: Central Bank of Russia, Company calculations

Liquidity of shares	Rosseti Centre	Rosseti Centre & Volga Reg
Number of deals, pcs	468	362
Trading volume, ₺ mln	2,0	2,9
Trading volume, mln pcs	7,8	17,0
Average trading volume over the last 30 days, mln pcs	28,7	54,2
% of the share capital	0,02%	0,02%

Source: MOEX, Company calculations

Shares	Price*, ₺	MCap, ₺ bln	MCap, \$ mln
Rosseti Centre	0,2526	10,66	173,62
Rosseti Centre and Volga region	0,1705	19,21	312,82

Source: MOEX, Company calculations

Comparison with indexes	Change	
	per day	fr 31.12.21
STOXX 600 Utilities	-0,52%	-4,16%
MoexEU	-0,18%	-28,68%
Rosseti Centre*	-0,94%	-38,75%
Rosseti Centre and Volga region*	-0,06%	-26,09%

Source: MOEX, Company calculations

Grid companies	Change*	
	per day	fr 31.12.21
Rosseti	-0,60%	-46,30%
Rosseti FGC UES	-0,29%	-44,22%
Rosseti Volga	0,17%	-41,35%
Rosseti Moscow Region	-0,57%	-29,41%
Rosseti Northern Caucasus	1,46%	-63,86%
Rosseti North-West	-0,89%	-46,18%
Rosseti Ural	0,49%	-7,36%
Rosseti Siberia	0,38%	-23,56%
Rosseti South	0,16%	-29,79%
Rosseti Lenenergo	0,30%	-21,12%
Rosseti Tomsk	0,73%	-23,27%
Rosseti Kuban	-1,11%	-18,87%

Source: MOEX, Company calculations

\* - at the market price at MOEX

## ickers

Moscow Exchange (MOEX)

Bloomberg

Reuters

MRKC

MRKC.RM

MRKC.MM