

ELECTRIC POWER INDUSTRY NEWS

Rosseti entered the top five state-owned companies in Russia in terms of procurement management quality

The IV rating of procurement management quality has been announced. Its methodology is based on the analysis of quantitative and qualitative indicators reflecting key aspects of the functioning of corporate systems. Rosseti confirmed its place in the top 5 rating among organizations operating under Federal Law 223.

Read full text: <https://www.rosseti.ru/>

COMPANY NEWS

Adviser to the Head of the Russian Emergencies Ministry Daniil Martynov visited the camp of the Rapid Deployment Group of Rosseti Centre

During a working visit to the Kursk region, Adviser to the Minister of the Russian Emergencies Ministry Daniil Martynov visited the camp of the Rapid Deployment Group of Rosseti Centre, where he met with General Director of the energy company Igor Makovskiy. Adviser to the Minister inspected the camp of the Rapid Deployment Group, got acquainted with its infrastructure and arrangement, and talked with the operational personnel.

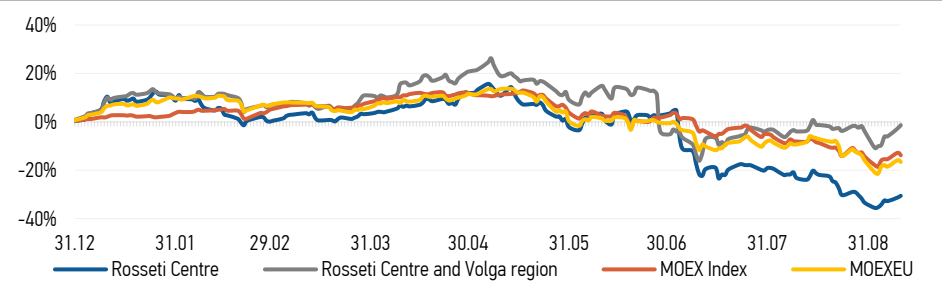
Read full text: <https://mrsk-1.ru/>

Tulenergo and Kalugaenergo connected 4 schools to the power grid

In Tula, Gymnasium No. 11 named after Alexander and Oleg Troyanovsky, Education Centre No. 39 named after Hero of the Soviet Union Alexey Rogozhin, and the training building of Education Centre No. 26 were connected. The total capacity is 500 kW. Kalugaenergo's employees provided electricity to a modern school with an engineering and technological focus, Novye Sozvezdiya, in the Baikonur microdistrict. To do this, the power engineers constructed 10 kV cable lines and installed a transformer substation. The connected capacity of the facility was 700 kW.

Read full text: <https://energo-news.ru/>

CHANGES OF KEY INDEXES AND SHARES OF THE COMPANIES



IR-NEWS

- All branches of [Rosseti Centre and Rosseti Centre and Volga region](#) have been defined as systemically important territorial grid organizations
- [Rosseti Centre](#) – managing organization of [Rosseti Centre and Volga region](#) published a presentation on the results of operations of the companies for 6 months of 2024 under IFRS
- The Russian Institute of Directors has confirmed the National Corporate Governance Rating (NCGR) of [Rosseti Centre](#) at NCGR 7 “Developed Corporate Governance Practice”

Rosseti Centre, PJSC

119017, Moscow, Malaya Ordynka St., 15

Corporate Governance Department

+7 (495) 747 92 92, ext. 33-34

ir@mrsk-1.ru

<http://www.mrsk-1.ru/en/investors/>



| World indexes | Value | Change | |
|---------------|------------|---------|-------------|
| | | per day | fr 31.12.23 |
| MOEX Russia | 2 671.38 | -1.18% | -13.80% |
| S&P 500 | 5 495.52 | 0.45% | 43.51% |
| FTSE 100 | 8 205.98 | -0.78% | 10.12% |
| Nikkei | 36 159.16 | -0.16% | 40.04% |
| Sensex | 81 921.29 | 0.44% | 34.65% |
| CSI300 | 3 195.76 | 0.09% | -17.14% |
| Bovespa | 134 319.58 | -0.31% | 27.52% |

Source: MOEX, Company calculations

| Currency rates | Value | Change | |
|----------------|---------|---------|-------------|
| | | per day | fr 31.12.23 |
| USD/RUB | 90.3853 | 0.63% | 0.09% |
| EURO/RUB | 99.9067 | 0.19% | -0.64% |

Source: Central Bank of Russia, Company calculations

| Liquidity of shares | Rosseti Centre | Rosseti Centre & Volga Reg |
|---|----------------|----------------------------|
| Number of deals, pcs | 1 413 | 1 141 |
| Trading volume, P mln | 15.3 | 36.1 |
| Trading volume, mln pcs | 39.1 | 118.7 |
| Average trading volume over the last 30 days, mln pcs | 60.3 | 118.1 |
| % of the share capital | 0.09% | 0.11% |

Source: MOEX, Company calculations

| Shares | Price*, P | MCap, P bln | MCap, \$ mln |
|---------------------------------|-----------|-------------|--------------|
| Rosseti Centre | 0.3908 | 16.50 | 182.54 |
| Rosseti Centre and Volga region | 0.3041 | 34.27 | 379.17 |

Source: MOEX, Company calculations

| Comparison with indexes | Change | |
|----------------------------------|---------|-------------|
| | per day | fr 31.12.23 |
| STOXX 600 Utilities | -0.04% | 13.92% |
| MoexEU | -0.85% | -16.57% |
| Rosseti Centre* | 1.09% | -30.54% |
| Rosseti Centre and Volga region* | 1.43% | -1.36% |

Source: MOEX, Company calculations

| Grid companies | Change* | |
|---------------------------|---------|-------------|
| | per day | fr 31.12.23 |
| Rosseti | 0.10% | -23.34% |
| Rosseti Volga | 0.32% | 12.00% |
| Rosseti Moscow Region | 1.17% | -8.73% |
| Rosseti Northern Caucasus | 1.23% | -25.08% |
| Rosseti North-West | -0.65% | -32.02% |
| Rosseti Ural | 1.79% | 11.08% |
| Rosseti Siberia | 0.45% | -19.04% |
| Rosseti South | 2.23% | -6.91% |
| Rosseti Lenenergo | 0.00% | -24.83% |
| Rosseti Tomsk | 0.91% | -1.47% |
| Rosseti Kuban | 4.42% | -16.05% |

Source: MOEX, Company calculations

* - at the market price at MOEX

Tickers

Moscow Exchange (MOEX)

[MRKC](#)

Bloomberg

[MRKC.RM](#)

Reuters

[MRKC.MM](#)