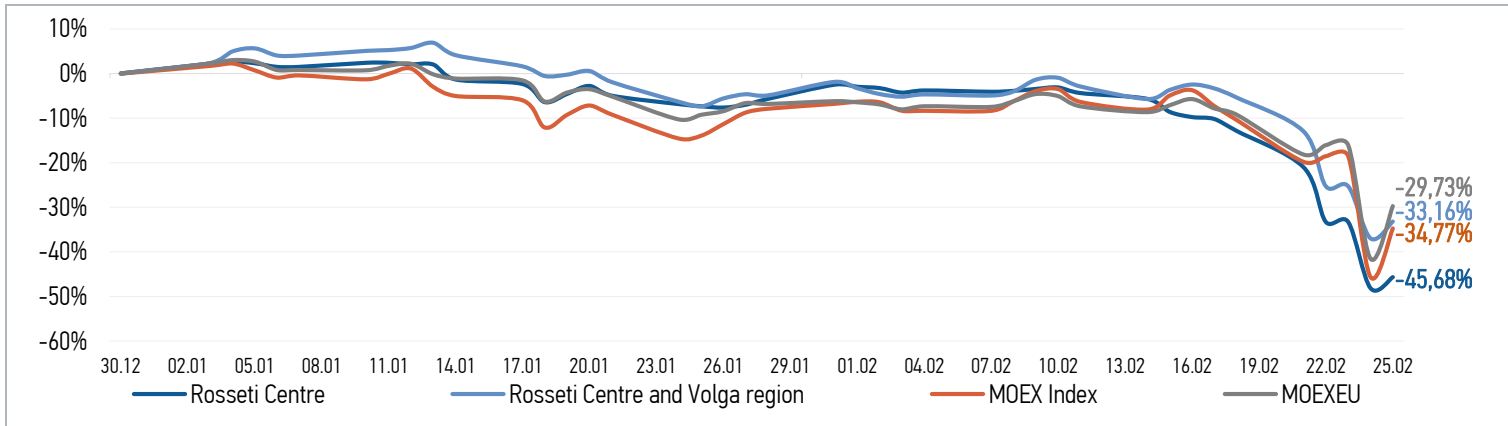


CHANGES OF KEY INDEXES AND SHARES OF THE COMPANIES

SHARES OF ROSSETI CENTRE

Date	Market price, RUB	Market price change, %	Trading volume, RUB	Trading volume, pcs	% of share capital	Number of deals, pcs
21.02.2022	0,3256	-9,35%	58 775 258	180 472 000	0,43%	5 105
22.02.2022	0,2750	-15,54%	72 139 233	262 244 000	0,62%	4 363
23.02.2022	0,2910	5,82%	0	0	0,00%	0
24.02.2022	0,2138	-26,53%	25 868 706	120 997 000	0,29%	3 590
25.02.2022	0,2240	4,77%	32 743 249	146 110 000	0,35%	2 916
Average trading volume over the last 30 days				57 240 897	0,14%	

SHARES OF ROSSETI CENTRE AND VOLGA REGION

Date	Market price, RUB	Market price change, %	Trading volume, RUB	Trading volume, pcs	% of share capital	Number of deals, pcs
21.02.2022	0,2008	-8,02%	90 605 636	451 200 000	0,40%	6 205
22.02.2022	0,1724	-14,14%	101 901 261	590 910 000	0,52%	4 873
23.02.2022	0,1927	11,77%	0	0	0,00%	0
24.02.2022	0,1455	-24,49%	44 583 250	306 310 000	0,27%	2 489
25.02.2022	0,1542	5,98%	35 322 723	229 020 000	0,20%	2 068
Average trading volume over the last 30 days				134 461 034	0,12%	

CHANGES OF PRICES OF SHARES OF GRID COMPANIES

Grid companies	Change*		Grid companies	Change*	
	for 5 days	from 31.12.20		for 5 days	from 31.12.20
Rosseti, ordinary shares	-35,61%	-42,66%	Rosseti North-West	-33,64%	-38,14%
Rosseti FGC UES	-35,03%	-45,33%	Rosseti Ural	-29,57%	-30,12%
Rosseti Centre	-37,64%	-45,68%	Rosseti Siberia	-32,56%	-41,67%
Rosseti Centre and Volga region	-29,36%	-33,16%	Rosseti South	-17,89%	-23,26%
Rosseti Volga	-33,56%	-41,05%	Rosseti Lenenergo, ordinary shares	-24,14%	-28,76%
Rosseti Moscow Region	-27,64%	-33,90%	Rosseti Tomsk, ordinary shares	-15,61%	-26,59%
Rosseti Northern Caucasus	-26,38%	-34,28%	Rosseti Kuban	-19,87%	-25,72%

Source: data from moex.com, Company calculations

* - at the market price at MOEX