

ELECTRIC POWER INDUSTRY NEWS

"Market Council" assessed consumer payments for new nuclear power plants

Rosatom disclosed to specialized regulators the price parameters of two power units of the Kursk NPP-2 with a capacity of 2.4 GW.

Read full text: <https://www.bigpowernews.ru/>

COMPANY NEWS

Semiannual Collegium of Heads of the Security Unit of Rosseti Centre and Rosseti Centre and Volga region takes place in Moscow

The purpose of the event, held on behalf of Igor Makovskiy, General Director of the energy companies, is to sum up the results of the work for the first 6 months of 2022 and approve plans for the upcoming six months.

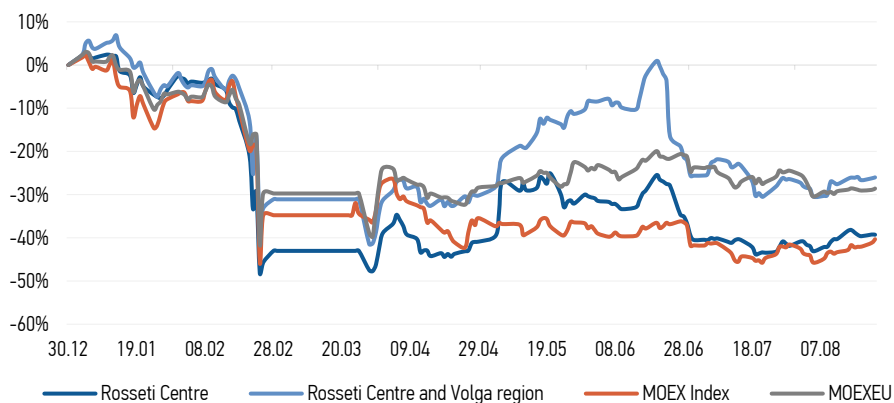
Read full text: <https://www.mrsk-1.ru/>

Rosseti Centre and Volga region connected a residential complex in the Zavyalovsky district of Udmurtia

Power engineers of the branch of Rosseti Centre and Volga region, PJSC - Udmurtenergo connected to the company's grids apartment buildings of the "Znak" residential complex under construction, located in the Zavyalovsky district of the Udmurt Republic, directly adjacent to Izhevsk.

Read full text: <https://mrsk-cp.ru/>

CHANGES OF KEY INDEXES AND SHARES OF THE COMPANIES



IR-NEWS

- Financial statements of [Rosseti Centre](#) and [Rosseti Centre and Volga region](#) under RAS for 1H 2022 published
- [Integrated annual reports](#) of Rosseti Centre, PJSC and Rosseti Centre and Volga region, PJSC for 2021 published
- Annual General Meetings of Shareholders of [Rosseti Centre](#) and [Rosseti Centre and Volga region](#) held

Rosseti Centre, PJSC

119017, Moscow, Malaya Ordynka St., 15

Corporate Governance Department

+7 (495) 747 92 92, ext. 33-34

ir@mrsk-1.ru

<http://www.mrsk-1.ru/en/investors/>



World indexes	Value	Change	
		per day	fr 31.12.21
MOEX Russia	2 260,08	1,43%	-40,32%
S&P 500	4 128,73	-0,22%	-13,37%
FTSE 100	7 488,11	-0,61%	1,40%
Nikkei	28 452,75	-1,19%	-1,18%
Sensex	59 031,30	0,00%	1,33%
CSI300	4 161,08	0,00%	-15,77%
Bovespa	112 857,10	2,13%	7,67%

Source: MOEX, Company calculations

Currency rates	Value	Change	
		per day	fr 31.12.21
USD/RUB	59,7419	1,03%	-19,59%
EURO/RUB	59,5344	0,24%	-29,18%

Source: Central Bank of Russia, Company calculations

Liquidity of shares	Rosseti Centre		Rosseti Centre & Volga Reg	
	Value	Change	Value	Change
Number of deals, pcs	539		302	
Trading volume, P mln	4,9		3,1	
Trading volume, mln pcs	19,4		18,2	
Average trading volume over the last 30 days, mln pcs	27,6		49,6	
% of the share capital	0,05%		0,02%	

Source: MOEX, Company calculations

Shares	Price*, P	MCap, P bln	MCap, \$ mln
Rosseti Centre	0,2504	10,57	176,95
Rosseti Centre and Volga region	0,1707	19,24	322,01

Source: MOEX, Company calculations

Comparison with indexes	Change	
	per day	fr 31.12.21
STOXX 600 Utilities	-0,63%	-5,38%
MoexEU	0,44%	-28,59%
Rosseti Centre*	-0,08%	-39,28%
Rosseti Centre and Volga region*	0,29%	-26,01%

Source: MOEX, Company calculations

Grid companies	Change*	
	per day	fr 31.12.21
Rosseti	-0,05%	-46,79%
Rosseti FGC UES	0,61%	-44,43%
Rosseti Volga	0,86%	-40,95%
Rosseti Moscow Region	-0,29%	-30,14%
Rosseti Northern Caucasus	0,61%	-63,41%
Rosseti North-West	-0,18%	-45,89%
Rosseti Ural	-0,94%	-4,64%
Rosseti Siberia	-0,56%	-24,14%
Rosseti South	-0,47%	-30,23%
Rosseti Lenenergo	0,15%	-21,96%
Rosseti Tomsk	0,00%	-22,71%
Rosseti Kuban	0,00%	-17,96%

Source: MOEX, Company calculations

* - at the market price at MOEX

ickers

Moscow Exchange (MOEX)

Bloomberg

Reuters

[MRKC](#)

[MRKC.RM](#)

[MRKC.MM](#)