

# DAILY MARKET REVIEW

## ELECTRIC POWER INDUSTRY NEWS

### An exhibition of works by Albrecht Durer opened in the Hermitage with the support of Rosseti's Group

The large-scale exposition is timed to coincide with the 550th anniversary of the birth of one of the greatest masters of the Renaissance. More than 400 works are exhibited in the Nicholas Hall of the Winter Palace. The opening ceremony was attended by Director of the State Hermitage Museum Mikhail Piotrovsky and First Deputy Director General - Executive Director of PJSC Rosseti Andrey Murov.

Read full text: <https://www.rosseti.ru/press/news/>

## COMPANY NEWS

### Tamboverenergo introduced a high alert mode due to worsening weather conditions

In connection with the predicted unfavourable weather conditions in the form of wet snow, increased wind up to 18 m/s in the Tambov region on 7 December 2021, a high alert mode was introduced at the branch of Rosseti Centre, PJSC - Tamboverenergo, which implies full mobilization of forces and means.

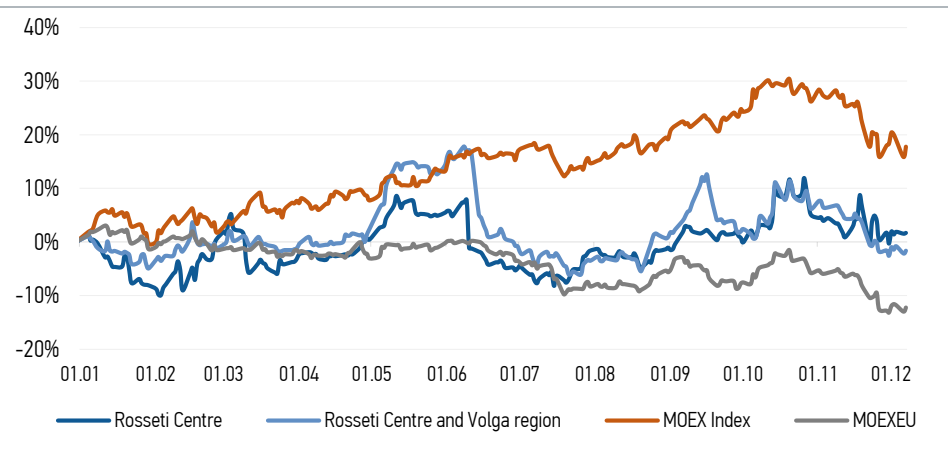
Read full text: <https://tamlife.ru/>

### Power engineers of Rosseti Centre and Volga region - Vladimirenergo are put on high alert

Due to the predicted deterioration of weather conditions (heavy snow, wind in gusts up to 14 m/s), a high alert mode was introduced at the branch of Rosseti Centre and Volga region, PJSC - Vladimirenergo, implying full mobilization of forces and means.

Read full text: [https://mrsk-cp.ru/press/company\\_news/](https://mrsk-cp.ru/press/company_news/)

## CHANGES OF KEY INDEXES AND SHARES OF THE COMPANIES



## IR-NEWS

- [Rosseti Centre - managing organization of Rosseti Centre and Volga region held a conference call and webcast on the results for 9 months of 2021](#)
- [Rosseti Centre](#) and [Rosseti Centre and Volga region](#) published their performance results for 9 months of 2021 under IFRS
- Financial statements of [Rosseti Centre](#) and [Rosseti Centre and Volga region](#) for 9 months of 2021 under RAS were published

## Rosseti Centre, PJSC

119017, Moscow, Malaya Ordynka St., 15

Corporate Governance Department

+7 (495) 747 92 92, ext. 33-34

ir@mrsk-1.ru

<http://www.mrsk-1.ru/en/investors/>



World indexes	Value	Change	
		per day	fr 31.12.20
MOEX Russia	3 873,20	1,66%	17,76%
S&P 500	4 686,75	2,07%	24,78%
FTSE 100	7 339,90	1,49%	11,96%
Nikkei	28 455,60	1,89%	3,69%
Sensex	57 633,65	1,56%	20,70%
CSI300	4 922,10	0,60%	-5,55%
Bovespa	107 557,70	0,65%	-9,63%

Source: MOEX, Company calculations

Currency rates	Value	Change	
		per day	fr 31.12.20
USD/RUB	73,6694	-0,10%	-0,28%
EURO/RUB	83,1138	-0,15%	-8,35%

Source: Central Bank of Russia, Company calculations

Liquidity of shares	Rosseti Centre & Volga Reg	
	Rosseti Centre	Rosseti Centre & Volga Reg
Number of deals, pcs	678	475
Trading volume, P mln	7,0	6,6
Trading volume, mln pcs	17,1	26,5
Average trading volume over the last 30 days, mln pcs	38,9	55,5
% of the share capital	0,04%	0,02%

Source: MOEX, Company calculations

Shares	Price*, P	MCap, P bln	MCap, \$ mln
Rosseti Centre	0,4080	17,22	233,81
Rosseti Centre and Volga region	0,2480	27,95	379,38

Source: MOEX, Company calculations

Comparison with indexes	Change	
	per day	fr 31.12.20
STOXX 600 Utilities	0,97%	2,56%
MoexEU	0,88%	-12,26%
Rosseti Centre*	0,15%	1,69%
Rosseti Centre and Volga region*	0,53%	-1,63%

Source: MOEX, Company calculations

Grid companies	Change*	
	per day	fr 31.12.20
Rosseti	0,43%	-30,37%
Rosseti FGC UES	-2,14%	-27,10%
Rosseti Volga	-0,38%	-22,02%
Rosseti Moscow Region	0,00%	-10,17%
Rosseti Northern Caucasus	-0,35%	-4,35%
Rosseti North-West	-1,49%	-2,39%
Rosseti Ural	-0,22%	11,62%
Rosseti Siberia	0,81%	-3,13%
Rosseti South	-0,11%	-4,11%
Rosseti Lenenergo	-0,23%	62,52%
Rosseti Tomsk	0,00%	-8,57%
Rosseti Kuban	-0,74%	-1,47%

Source: MOEX, Company calculations

\* - at the market price at MOEX

## Tickers

Moscow Exchange (MOEX)

Bloomberg

Reuters

[MRKC](#)

[MRKC.RM](#)

[MRKC.MM](#)