

ELECTRIC POWER INDUSTRY NEWS

From 2026 it will be possible to submit applications for connection to grids of all power grid companies through the public services portal

From 1 January 2026, citizens and organizations will be able to submit an application for connection to electric grids of all power grid companies through their personal account on the public services portal. The corresponding government resolution was published on the Cabinet of Ministers' website. The decision will simplify and speed up the procedure for connection to the power grid. It will affect both citizens building summer cottages or residential buildings, and construction companies building residential, social, industrial and other facilities.

Read full text: <https://bigpowernews.ru/>

COMPANY NEWS

Smolenskenergo informs about scheduled repairs in September 2024

In cases of scheduled repairs, commissioning of new power lines or new power grid equipment, employees of the branch of Rosseti Centre – Smolenskenergo temporarily suspend power supply to avoid emergency situations and minimize risks. Smolenskenergo, based on the overhaul plan, monthly forms a schedule of planned outages, indicating the facilities and dates. At the same time, the branch's specialists try to perform the maximum possible amount of work at the facility without interrupting the power supply to consumers, and to carry out work related to the outage in the shortest possible time.

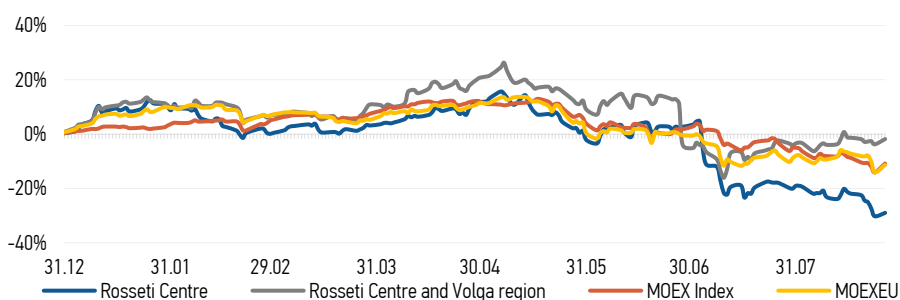
Read full text: <https://glinka.admin-smolensk.ru/>

The Ryazanenergo branch invites consumers to a Customer Day

The branch of Rosseti Centre and Volga region – Ryazanenergo continues to hold the Customer Day. The list of topics on which consumers can contact energy specialists has been expanded. Residents can receive advice on issues of quality and reliability of power supply, connection to electric grids, etc.

Read full text: <https://mrsk-cp.ru/>

CHANGES OF KEY INDEXES AND SHARES OF THE COMPANIES



IR-NEWS

- Financial statements of [Rosseti Centre](#) and [Rosseti Centre and Volga region](#) under RAS for 6M 2024 published
- [Rosseti Centre](#) and [Rosseti Centre and Volga region](#) published integrated annual reports for 2023
- [Rosseti Centre, PJSC](#) – managing organization of [Rosseti Centre and Volga region, PJSC](#) published a presentation on the companies' performance results for 3 months of 2024

Rosseti Centre, PJSC

119017, Moscow, Malaya Ordynka St., 15

Corporate Governance Department

+7 (495) 747 92 92, ext. 33-34

ir@mrsk-1.ru

<http://www.mrsk-1.ru/en/investors/>



Tickers

Moscow Exchange (MOEX)

[MRKC](#)

Bloomberg

[MRKC.RM](#)

Reuters

[MRKC.MM](#)

World indexes	Value	Change	
		per day	fr 31.12.23
MOEX Russia	2 763,75	3,80%	-10,82%
S&P 500	5 616,84	-0,32%	46,68%
FTSE 100	8 327,78	0,00%	11,76%
Nikkei	38 110,22	-0,66%	47,60%
Sensex	81 698,11	0,75%	34,28%
CSI300	3 324,22	-0,09%	-13,81%
Bovespa	136 888,70	0,94%	29,96%

Source: MOEX, Company calculations

Currency rates	Value	Change	
		per day	fr 31.12.23
USD/RUB	91,6012	0,00%	1,44%
EURO/RUB	101,6125	0,00%	1,06%

Source: Central Bank of Russia, Company calculations

Liquidity of shares	Rosseti Centre	Rosseti Centre & Volga Reg
Number of deals, pcs	1 851	883
Trading volume, P mln	18,2	20,3
Trading volume, mln pcs	45,6	67,0
Average trading volume over the last 30 days, mln pcs	62,4	108,6
% of the share capital	0,11%	0,06%

Source: MOEX, Company calculations

Shares	Price*, P	MCap, P bln	MCap, \$ mln
Rosseti Centre	0,3994	16,86	184,08
Rosseti Centre and Volga region	0,3027	34,11	372,41

Source: MOEX, Company calculations

Comparison with indexes	Change	
	per day	fr 31.12.23
STOXX 600 Utilities	0,21%	9,27%
MoexEU	3,23%	-11,33%
Rosseti Centre*	1,84%	-29,01%
Rosseti Centre and Volga region*	2,02%	-1,82%

Source: MOEX, Company calculations

Grid companies	Change*	
	per day	fr 31.12.23
Rosseti	1,36%	-12,66%
Rosseti Volga	2,20%	8,84%
Rosseti Moscow Region	0,66%	-9,98%
Rosseti Northern Caucasus	0,87%	-23,09%
Rosseti North-West	4,32%	-19,78%
Rosseti Ural	-0,25%	7,88%
Rosseti Siberia	4,51%	-15,09%
Rosseti South	3,32%	2,78%
Rosseti Lenenergo	5,12%	-14,52%
Rosseti Tomsk	-0,53%	10,03%
Rosseti Kuban	0,57%	-9,02%

Source: MOEX, Company calculations

* - at the market price at MOEX