

ELECTRIC POWER INDUSTRY NEWS

The expert told how the sanctions will affect the Russian energy sector

The volume of capital expenditures for the implementation of projects in the Russian energy sector during 2022 may be reduced by 5-20% compared to last year due to sanctions, Alexander Osin, an analyst at Freedom Finance's trading operations department in the Russian stock market, told RIA Novosti.

Read full text: <https://1prime.ru/>

COMPANY NEWS

Smolensk power engineers did not have work injuries in 2021

In 2021, the branch of Rosseti Centre - Smolenskenergo spent 64.874 million rubles to implement measures aimed at reducing the risks of industrial injuries, meeting the requirements of labour protection regulations, and improving the sanitary and living conditions of personnel. The funds were used to provide the personnel of the branch with modern means of protection and tools to ensure the safe performance of work.

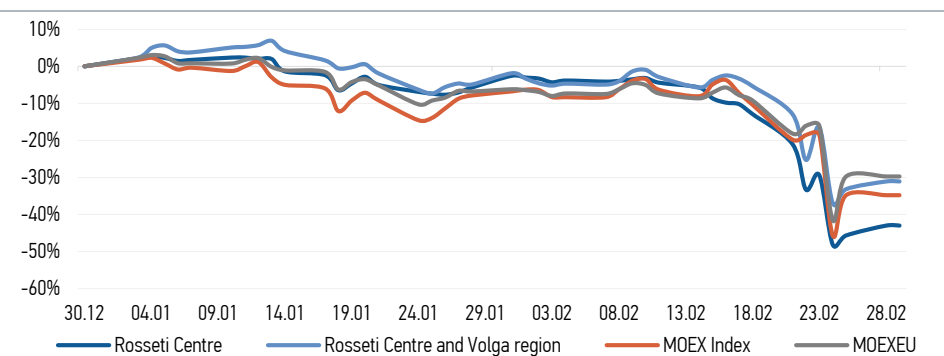
Read full text: <https://smol.aif.ru/>

Tulenergo provided grid connection of 20 medical institutions of the region

In 2021, power engineers of Rosseti Centre and Volga region - Tulenergo carried out work on the grid connection of power installations of 20 medical institutions, including 16 feldsher-obstetric stations in 11 districts of the Tula region.

Read full text: <https://mrsk-cp.ru/affiliates/>

CHANGES OF KEY INDEXES AND SHARES OF THE COMPANIES



IR-NEWS

- [Rosseti Centre - managing organization of Rosseti Centre and Volga region took part in the VTB Capital Investments online public event dedicated to operating results for 2021 and forecasts for 2022](#)
- [Rosseti Centre](#) and [Rosseti Centre and Volga region](#) approved the Companies' Business Plan for 2022
- [Rosseti Centre - managing organization of Rosseti Centre and Volga region held a conference call and webcast on the results for 9 months of 2021](#)

World indexes	Value	Change	
		per day	fr 31.12.21
MOEX Russia	2 470,48	0,00%	-34,77%
S&P 500	4 306,26	-1,55%	-9,65%
FTSE 100	7 330,20	-1,72%	-0,74%
Nikkei	26 844,72	1,20%	-6,76%
Sensex	56 247,28	0,00%	-3,44%
CSI300	4 619,69	0,83%	-6,49%
Bovespa	113 141,90	0,00%	7,94%

Source: MOEX, Company calculations

Currency rates	Value	Change	
		per day	fr 31.12.21
USD/RUB	93,5589	11,98%	25,93%
EURO/RUB	104,4772	11,62%	24,27%

Source: Central Bank of Russia, Company calculations

Liquidity of shares	Rosseti Centre & Volga Reg	
	Rosseti Centre	Rosseti Centre & Volga Reg
Number of deals, pcs	0	0
Trading volume, P mln	0,0	0,0
Trading volume, mln pcs	0,0	0,0
Average trading volume over the last 30 days, mln pcs	53,3	122,7
% of the share capital	0,00%	0,00%

Source: MOEX, Company calculations

Shares	Price*, P	MCap, P bln	MCap, \$ mln
Rosseti Centre	0,2350	9,92	106,04
Rosseti Centre and Volga region	0,1590	17,92	191,53

Source: MOEX, Company calculations

Comparison with indexes	Change	
	per day	fr 31.12.21
STOXX 600 Utilities	-4,40%	-5,00%
MoexEU	0,00%	-29,73%
Rosseti Centre*	0,00%	-43,02%
Rosseti Centre and Volga region*	0,00%	-31,08%

Source: MOEX, Company calculations

Grid companies	Change*	
	per day	fr 31.12.21
Rosseti	0,00%	-39,06%
Rosseti FGC UES	0,00%	-43,65%
Rosseti Volga	0,00%	-40,64%
Rosseti Moscow Region	0,00%	-34,14%
Rosseti Northern Caucasus	0,00%	-34,28%
Rosseti North-West	0,00%	-37,75%
Rosseti Ural	0,00%	-30,35%
Rosseti Siberia	0,00%	-42,39%
Rosseti South	0,00%	-21,82%
Rosseti Lenenergo	0,00%	-24,22%
Rosseti Tomsk	0,00%	-26,59%
Rosseti Kuban	0,00%	-25,72%

Source: MOEX, Company calculations

* - at the market price at MOEX

Rosseti Centre, PJSC

119017, Moscow, Malaya Ordynka St., 15

Corporate Governance Department

+7 (495) 747 92 92, ext. 33-34

ir@mrsk-1.ru

<http://www.mrsk-1.ru/en/investors/>



Tickers

Moscow Exchange (MOEX)

Bloomberg

Reuters

[MRKC](#)

[MRKC.RM](#)

[MRKC.MM](#)