

DAILY MARKET REVIEW

ELECTRIC POWER INDUSTRY NEWS

The Ministry of Energy expects an increase in electricity consumption in the Russian Federation in 2021 to the level of 2019

The Ministry of Energy of the Russian Federation expects an increase in electricity consumption in Russia in 2021 to the level of 2019 and its possible excess by 0.5%. TASS was informed about this by Deputy Minister Pavel Snikkars on the sidelines of the Gaidar Forum.

Read full text: <https://tass.ru/>

COMPANY NEWS

Historical maximum of energy consumption recorded in the Belgorod region

Employees of "Rosseti Centre Belgorodenergo" recorded the historical maximum of energy consumption on 17 January at 6:00 p.m. It amounted to 2,269 MW. The abnormally cold weather became the reason.

Read full text: <https://www.mrsk-1.ru/press-center/news/>

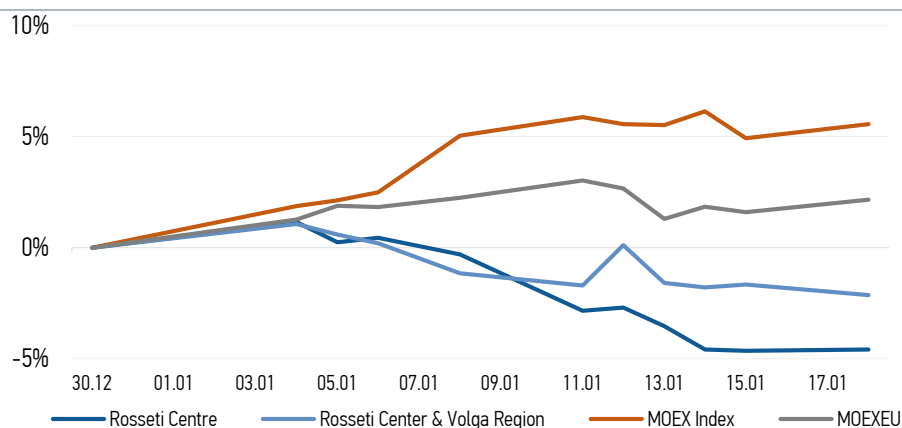
"Rosseti Center and Volga Region Nizhnovenergo" began servicing street lighting in Bor

"Rosseti Center and Volga Region Nizhnovenergo" signed a contract with the administration of the city of Bor in the Nizhny Novgorod region for maintenance and repair of street lighting.

During 2021, power engineers will serve 5.5 thousand street lighting fixtures, 315 km of overhead and cable power lines, monitor the condition of 3.2 thousand poles.

Read full text: https://mrsk-cp.ru/press/company_news/

CHANGES OF KEY INDEXES AND SHARES OF THE COMPANIES



IR-NEWS

29 December 2020 A meeting of the Board of Directors of Rosseti Center and Volga Region was held, which approved the Company's Business Plan for 2021 and forecast indicators for 2022-2025

29 December 2020 A meeting of the Board of Directors of Rosseti Centre was held, which approved the Company's Business Plan for 2021 and forecast indicators for 2022-2025

1 December 2020 Rosseti Centre - managing organization of Rosseti Center and Volga Region held a conference call and webcast dedicated to the consolidated performance results of the Companies for 9 months of 2020

IDGC of Centre, PJSC

119017, Moscow, Malaya Ordynka St., 15

Corporate Governance Department

+7 (495) 747 92 92, ext. 33-34

ir@mrsk-1.ru

<http://www.mrsk-1.ru/en/investors/>



World indexes	Value	Change	
		per day	fr 31.12.20
MOEX Russia	3 471,92	0,61%	5,56%
S&P 500	3 768,25	0,00%	0,32%
FTSE 100	6 720,65	-0,22%	2,51%
Nikkei	28 242,21	-0,97%	2,91%
Sensex	48 564,27	-0,96%	1,70%
CSI300	5 518,52	1,11%	5,90%
Bovespa	120 348,80	0,00%	1,12%

Source: MOEX, Company calculations

Currency rates	Value	Change	
		per day	fr 31.12.20
USD/RUB	73,5453	-0,34%	-0,45%
EURO/RUB	89,2546	-0,44%	-1,57%

Source: Central Bank of Russia, Company calculations

Liquidity of shares	Rosseti	
	Centre	Center & Volga Reg
Number of deals, pcs	891	784
Trading volume, P mln	12,2	13,8
Trading volume, mln pcs	31,9	55,8
Average trading volume over the last 30 days, mln pcs	47,2	92,8
% of the share capital	0,08%	0,05%

Source: MOEX, Company calculations

Shares	Price*, P	MCap, P bln	MCap, \$ mln
Rosseti Centre	0,3828	16,16	219,74
Rosseti Center & Volga Region	0,2467	27,80	378,03

Source: MOEX, Company calculations

Comparison with indexes	Change	
	per day	fr 31.12.20
STOXX 600 Utilities	-0,81%	2,23%
MoexEU	0,56%	2,16%
Rosseti Centre*	0,05%	-4,59%
Rosseti Center & Volga Region*	-0,48%	-2,14%

Source: MOEX, Company calculations

Grid companies	Change*	
	per day	fr 31.12.20
Rosseti	0,70%	-3,30%
Rosseti FGC UES	-0,90%	-0,91%
Rosseti Volga	0,00%	2,58%
Rosseti Moscow Region	6,40%	5,98%
Rosseti Northern Caucasus	0,55%	-1,22%
Rosseti North-West	3,74%	9,75%
Rosseti Ural	-0,38%	-2,22%
Rosseti Siberia	0,00%	3,00%
Rosseti South	-0,20%	1,03%
Rosseti Lenenergo	-0,29%	33,46%
Rosseti Tomsk	-0,78%	-0,26%
Rosseti Kuban	-0,14%	7,82%

Source: MOEX, Company calculations

* - at the market price at MOEX

Tickers

Moscow Exchange (MOEX)

Bloomberg

Reuters

MRKC

MRKC.RM

MRKC.MM