

DAILY MARKET REVIEW

ELECTRIC POWER INDUSTRY NEWS

Electricity consumption in Russia increased in annual terms

"Electricity consumption in Russia since the beginning of September has grown by 6.32%, to 81.88 billion kWh, generation during this period increased by 7.26%, to 84 billion kWh. Since the beginning of the year, energy consumption has increased by 5.49% and amounted to 801.75 billion kWh, generation - by 6.42%, to 818.9 billion kWh," said Deputy Head of the Russian Ministry of Energy. In addition, as noted by Grabchak, consumption in the Unified Energy System of the Russian Federation (UES) has increased by 6.37% since the beginning of September and amounted to 80.67 billion kWh, since the beginning of the year - by 5.59%, to 789.7 billion kWh.

Read full text: <https://1prime.ru/>

COMPANY NEWS

Lipetskenergo took over the management of grids of LGEK and Gorelektroset

As part of the consolidation of power grid assets, which is being carried out by Rosseti's group of companies on behalf of the President of Russia, Lipetskenergo, a branch of Rosseti Centre, PJSC, took over the management of the power grid complexes of JSC Lipetsk City Energy Company and MUP Gorelektroset.

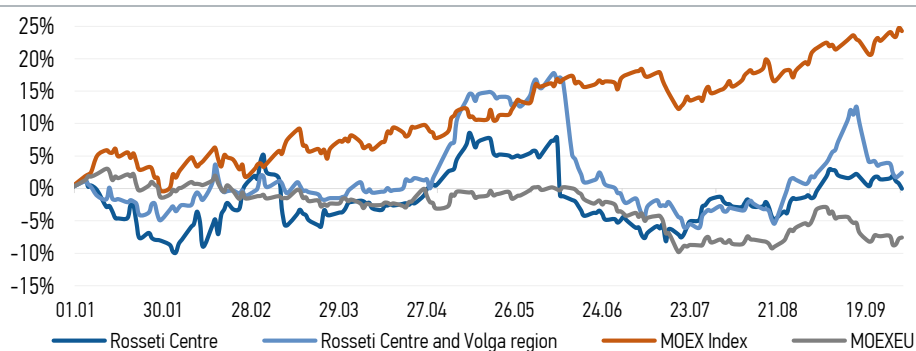
Read full text: <http://lipetskcit.ru/iblock/news/>

Kalugaenergo to provide additional capacity for a new livestock complex in the village of Efimtsevo of the Ulyanovsky district

As part of the implementation of additional services, Kalugaenergo, a branch of Rosseti Centre and Volga region, PJSC, will provide additional capacity for a new livestock complex in the village of Efimtsevo of the Ulyanovsky district. The facility will be provided with a capacity of 380 kW.

Read full text: https://www.mrsk-cp.ru/press/company_news

CHANGES OF KEY INDEXES AND SHARES OF THE COMPANIES



IR-NEWS

- [Rosseti Centre - managing organization of Rosseti Centre and Volga region held a conference call and webcast on the results for 6 months of 2021](#)
- [Rosseti Centre](#) and [Rosseti Centre and Volga region](#) published their performance results for 6 months of 2021 under IFRS
- Financial statements of [Rosseti Centre](#) and [Rosseti Centre and Volga region](#) for 1H 2021 under RAS were published

Rosseti Centre, PJSC

119017, Moscow, Malaya Ordynka St., 15

Corporate Governance Department

+7 (495) 747 92 92, ext. 33-34

ir@mrsk-1.ru

<http://www.mrsk-1.ru/en/investors/>



Tickers

Moscow Exchange (MOEX)

Bloomberg

Reuters

[MRKC](#)

[MRKC.RM](#)

[MRKC.MM](#)

| World indexes | Value | Change | |
|---------------|------------|---------|-------------|
| | | per day | fr 31.12.20 |
| MOEX Russia | 4 086,99 | -0,40% | 24,26% |
| S&P 500 | 4 357,04 | 1,15% | 16,00% |
| FTSE 100 | 7 026,39 | -0,85% | 7,18% |
| Nikkei | 28 771,07 | -2,31% | 4,83% |
| Sensex | 58 765,58 | -0,61% | 23,07% |
| CSI300 | 4 866,38 | 0,00% | -6,62% |
| Bovespa | 112 899,60 | 1,73% | -5,14% |

Source: MOEX, Company calculations

| Currency rates | Value | Change | |
|----------------|---------|---------|-------------|
| | | per day | fr 31.12.20 |
| USD/RUB | 72,6642 | -0,13% | -1,64% |
| EURO/RUB | 84,305 | -0,67% | -7,03% |

Source: Central Bank of Russia, Company calculations

| Liquidity of shares | Rosseti Centre | Rosseti Centre & Volga Reg |
|---|----------------|----------------------------|
| Number of deals, pcs | 418 | 816 |
| Trading volume, P mln | 4,1 | 8,2 |
| Trading volume, mln pcs | 10,1 | 31,9 |
| Average trading volume over the last 30 days, mln pcs | 17,6 | 90,0 |
| % of the share capital | 0,02% | 0,03% |

Source: MOEX, Company calculations

| Shares | Price*, P | MCap, P bln | MCap, \$ mln |
|---------------------------------|-----------|-------------|--------------|
| Rosseti Centre | 0,4010 | 16,93 | 232,98 |
| Rosseti Centre and Volga region | 0,2582 | 29,10 | 400,45 |

Source: MOEX, Company calculations

| Comparison with indexes | Change | |
|----------------------------------|---------|-------------|
| | per day | fr 31.12.20 |
| STOXX 600 Utilities | 1,14% | -5,36% |
| MoexEU | 0,20% | -7,57% |
| Rosseti Centre* | -0,79% | -0,05% |
| Rosseti Centre and Volga region* | 0,43% | 2,42% |

Source: MOEX, Company calculations

| Grid companies | Change* | |
|---------------------------|---------|-------------|
| | per day | fr 31.12.20 |
| Rosseti | 0,11% | -27,87% |
| Rosseti FGC UES | -0,11% | -16,47% |
| Rosseti Volga | 0,18% | -16,05% |
| Rosseti Moscow Region | -1,01% | -8,99% |
| Rosseti Northern Caucasus | 0,79% | -4,48% |
| Rosseti North-West | -0,96% | 4,14% |
| Rosseti Ural | -0,36% | 1,24% |
| Rosseti Siberia | -8,31% | -0,78% |
| Rosseti South | -0,32% | -4,93% |
| Rosseti Lenenergo | -0,95% | 20,08% |
| Rosseti Tomsk | -0,26% | -0,52% |
| Rosseti Kuban | 0,15% | 1,18% |

Source: MOEX, Company calculations

* - at the market price at MOEX