

## ELECTRIC POWER INDUSTRY NEWS

### The Ministry of Energy expects an increase in energy consumption in 2022 by 2%, to 1,129 billion kWh in the Russian Federation

Electricity consumption in Russia in 2022, according to the forecast of the Ministry of Energy, will grow by about 2% compared to 2021, to 1,129 billion kWh, the press service of the ministry said on 31 January.

Read full text: <https://peretok.ru/news/>

## COMPANY NEWS

### The Yarenergo branch took part in command and staff exercises of the Ministry of Emergency Situations

In the Yaroslavl region, command and staff exercises of the regional department of the Ministry of Emergency Situations were held to develop joint actions of various departments, organizations and services in difficult weather conditions. Employees of the branch of Rosseti Centre, PJSC - Yarenergo also took part in the large-scale training.

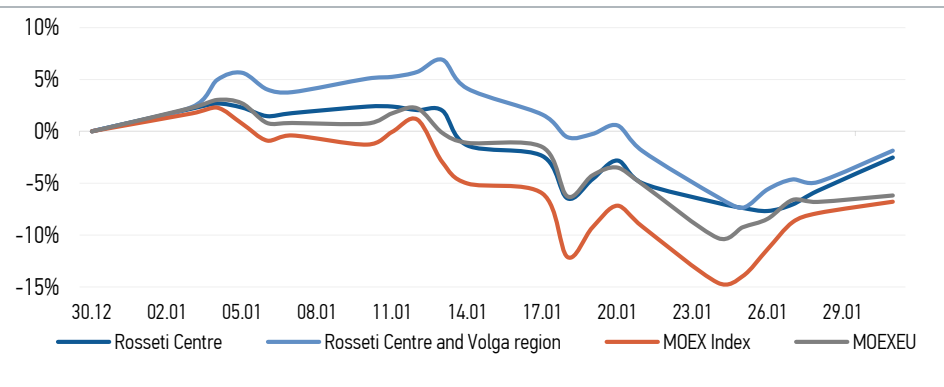
Read full text: <https://yar.mk.ru/>

### The Kalugaenergo branch summed up the results of the identification of illegal use of electricity for 2021

Kalugaenergo continues systematic work to identify and suppress illegal electricity consumption. In the course of inspections, power engineers check power installations for illegal connections and assess correct operation of metering devices.

Read full text: [https://mrsk-cp.ru/press/company\\_news/](https://mrsk-cp.ru/press/company_news/)

## CHANGES OF KEY INDEXES AND SHARES OF THE COMPANIES



## IR-NEWS

- [Rosseti Centre](#) and [Rosseti Centre and Volga region](#) approved the Companies' Business Plan for 2022
- [Rosseti Centre - managing organization of Rosseti Centre and Volga region held a conference call and webcast on the results for 9 months of 2021](#)
- [Rosseti Centre](#) and [Rosseti Centre and Volga region](#) published their performance results for 9 months of 2021 under IFRS

World indexes	Value	Change	
		per day	fr 31.12.21
MOEX Russia	3 530,38	1,20%	-6,78%
S&P 500	4 515,55	1,89%	-5,26%
FTSE 100	7 464,37	-0,02%	1,08%
Nikkei	27 001,98	1,07%	-6,22%
Sensex	58 014,17	1,42%	-0,41%
CSI300	4 563,77	0,00%	-7,62%
Bovespa	112 143,50	0,21%	6,98%

Source: MOEX, Company calculations

Currency rates	Value	Change	
		per day	fr 31.12.21
USD/RUB	77,8174	0,00%	4,74%
EURO/RUB	86,6419	0,00%	3,06%

Source: Central Bank of Russia, Company calculations

Liquidity of shares	Rosseti	
	Centre	Centre & Volga Reg
Number of deals, pcs	912	1 592
Trading volume, P mln	11,1	21,1
Trading volume, mln pcs	27,6	93,3
Average trading volume over the last 30 days, mln pcs	21,3	85,6
% of the share capital	0,07%	0,08%

Source: MOEX, Company calculations

Shares	Price*, P	MCap, P bln	MCap, \$ mln
Rosseti Centre	0,4020	16,97	218,10
Rosseti Centre and Volga region	0,2264	25,51	327,88

Source: MOEX, Company calculations

Comparison with indexes	Change	
	per day	fr 31.12.21
STOXX 600 Utilities	0,09%	-2,49%
MoexEU	0,67%	-6,18%
Rosseti Centre*	3,40%	-2,52%
Rosseti Centre and Volga region*	3,19%	-1,86%

Source: MOEX, Company calculations

Grid companies	Change*	
	per day	fr 31.12.21
Rosseti	1,31%	-7,48%
Rosseti FGC UES	0,28%	-10,58%
Rosseti Volga	-0,21%	-5,13%
Rosseti Moscow Region	0,71%	-2,26%
Rosseti Northern Caucasus	0,26%	-12,52%
Rosseti North-West	1,87%	0,19%
Rosseti Ural	2,79%	-4,19%
Rosseti Siberia	-0,50%	-13,36%
Rosseti South	0,23%	-2,21%
Rosseti Lenenergo	2,42%	-4,06%
Rosseti Tomsk	0,00%	-16,07%
Rosseti Kuban	0,16%	-7,15%

Source: MOEX, Company calculations

\* - at the market price at MOEX

## Rosseti Centre, PJSC

119017, Moscow, Malaya Ordynka St., 15

Corporate Governance Department

+7 (495) 747 92 92, ext. 33-34

ir@mrsk-1.ru

<http://www.mrsk-1.ru/en/investors/>



## Tickers

Moscow Exchange (MOEX)

Bloomberg

Reuters

[MRKC](#)

[MRKC.RM](#)

[MRKC.MM](#)