

## ELECTRIC POWER INDUSTRY NEWS

### Connecting houses and other facilities to the power grid can now be carried out in parallel with construction

The Government of the Russian Federation has changed the rules for new connection to electric grids. Now it will be possible to connect houses and other facilities to electricity in parallel with construction, Russian Prime Minister Mikhail Mishustin said on 17 January 2022 at a meeting with deputy prime ministers.

Read full text: <https://www.eprussia.ru/news/>

## COMPANY NEWS

### Tverenergo introduces electricity restrictions for persistent non-payers

The branch of Rosseti Centre - Tverenergo continues to implement measures aimed at paying off consumer accounts receivable. In the course of systematic work in this area, it was found that the total debt obligations for consumed electricity to date in the area where the branch performs the functions of the supplier of last resort amounted to more than 449.6 million rubles.

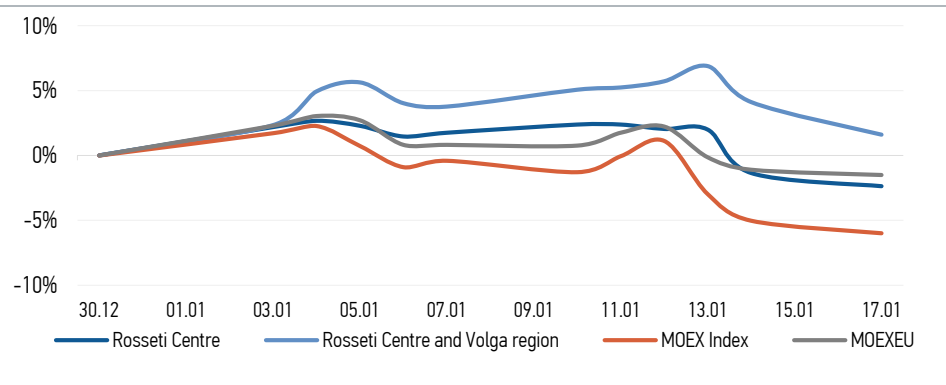
Read full text: <https://tvernews.ru/news/>

### Marienergo takes care of the environment

The Marienergo branch annually carries out work to improve the level of environmental safety in the Republic of Mari El. Power engineers carry out a set of special measures to maintain environmental safety in the region.

Read full text: <https://mrsk-cp.ru/affiliates/>

## CHANGES OF KEY INDEXES AND SHARES OF THE COMPANIES



## IR-NEWS

- [Rosseti Centre](#) and [Rosseti Centre and Volga region](#) approved the Companies' Business Plan for 2022
- [Rosseti Centre - managing organization of Rosseti Centre and Volga region held a conference call and webcast on the results for 9 months of 2021](#)
- [Rosseti Centre](#) and [Rosseti Centre and Volga region](#) published their performance results for 9 months of 2021 under IFRS

World indexes	Value	Change	
		per day	fr 31.12.21
MOEX Russia	3 560,35	-1,02%	-5,99%
S&P 500	4 662,85	0,00%	-2,17%
FTSE 100	7 611,23	0,91%	3,07%
Nikkei	28 333,52	0,74%	-1,59%
Sensex	61 308,91	0,14%	5,24%
CSI300	4 767,28	0,86%	-3,50%
Bovespa	106 927,80	0,00%	2,01%

Source: MOEX, Company calculations

Currency rates	Value	Change	
		per day	fr 31.12.21
USD/RUB	75,7668	0,00%	1,98%
EURO/RUB	86,8894	0,00%	3,35%

Source: Central Bank of Russia, Company calculations

Liquidity of shares	Rosseti Centre & Volga Reg	
	Rosseti Centre	Rosseti Centre & Volga Reg
Number of deals, pcs	678	1 578
Trading volume, P mln	5,9	20,4
Trading volume, mln pcs	14,6	86,9
Average trading volume over the last 30 days, mln pcs	18,8	63,5
% of the share capital	0,03%	0,08%

Source: MOEX, Company calculations

Shares	Price*, P	MCap, P bln	MCap, \$ mln
Rosseti Centre	0,4026	17,00	224,33
Rosseti Centre and Volga region	0,2344	26,42	348,65

Source: MOEX, Company calculations

Comparison with indexes	Change	
	per day	fr 31.12.21
STOXX 600 Utilities	0,45%	-1,92%
MoexEU	-0,41%	-1,50%
Rosseti Centre*	-1,03%	-2,38%
Rosseti Centre and Volga region*	-2,41%	1,60%

Source: MOEX, Company calculations

Grid companies	Change*	
	per day	fr 31.12.21
Rosseti	-0,95%	-0,48%
Rosseti FGC UES	-0,42%	-0,07%
Rosseti Volga	-0,70%	-0,70%
Rosseti Moscow Region	-0,97%	-1,05%
Rosseti Northern Caucasus	-0,70%	-4,99%
Rosseti North-West	-0,50%	-3,29%
Rosseti Ural	-1,13%	-0,79%
Rosseti Siberia	-1,50%	-5,46%
Rosseti South	-0,44%	-0,66%
Rosseti Lenenergo	-0,86%	-3,22%
Rosseti Tomsk	0,00%	-8,31%
Rosseti Kuban	-2,06%	1,37%

Source: MOEX, Company calculations

\* - at the market price at MOEX

## Rosseti Centre, PJSC

119017, Moscow, Malaya Ordynka St., 15

Corporate Governance Department

+7 (495) 747 92 92, ext. 33-34

ir@mrsk-1.ru

<http://www.mrsk-1.ru/en/investors/>



## Tickers

Moscow Exchange (MOEX)

Bloomberg

Reuters

[MRKC](#)

[MRKC.RM](#)

[MRKC.MM](#)