

DAILY MARKET REVIEW

ELECTRIC POWER INDUSTRY NEWS

Rosseti provided reliable power supply to more than 82,200 polling stations and territorial election commissions on the Single Election Day

More than 54,200 facilities were powered directly, the rest - through connected local grid companies. No significant technological violations were allowed. In case of emergency and recovery operations, Rosseti ensured the availability of 9,802 crews (47,586 power engineers, 23,927 vehicles, 5,075 mobile power supply sources).

Read full text: <https://rosseti.ru/press/news/>

COMPANY NEWS

Smolensk power engineers eliminated the consequences of an electricity failure

About 790 people of Smolensk were left without electricity on Monday, 20 September. According to representatives of Rosseti Centre, PJSC - Smolenskenergo, the specialists liquidated the consequences of a major failure in the power grids, which affected the residents of the Leninsky district of the city. It turned out that the fault occurred on the 10 kV cable line. The preliminary cause of the failure is seasonal soil movement.

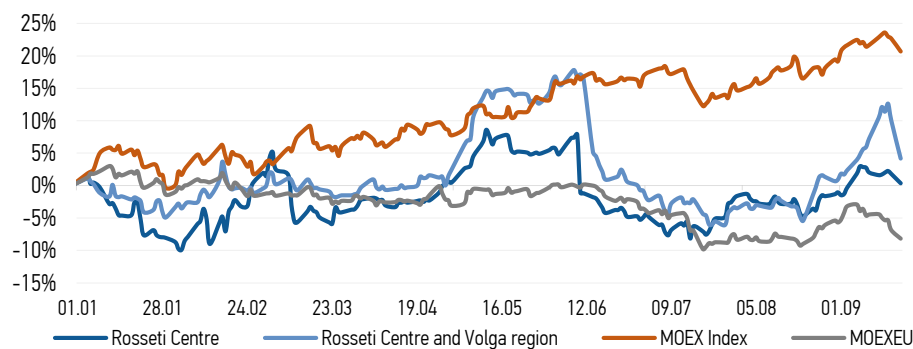
Read full text: <https://sn-gazeta.ru/news/>

"Rosseti Centre and Volga region Ivenergo" connected a new feldsher-midwife station in the village of Semigorye of the Ivanovo region to the power grid

Power engineers from "Rosseti Centre and Volga region Ivenergo" connected a new feldsher-midwife station to the grid, located in the village of Semigorye of the Vichugsky district. About 1,000 rural residents living in this settlement and 16 villages closest to it will now be able to receive qualified medical care in comfortable conditions.

Read full text: https://www.mrsk-cp.ru/press/company_news

CHANGES OF KEY INDEXES AND SHARES OF THE COMPANIES



IR-NEWS

- [Rosseti Centre - managing organization of Rosseti Centre and Volga region held a conference call and webcast on the results for 6 months of 2021](#)
- [Rosseti Centre](#) and [Rosseti Centre and Volga region](#) published their performance results for 6 months of 2021 under IFRS
- Financial statements of [Rosseti Centre](#) and [Rosseti Centre and Volga region](#) for 1H 2021 under RAS were published

Rosseti Centre, PJSC

119017, Moscow, Malaya Ordynka St., 15

Corporate Governance Department

+7 (495) 747 92 92, ext. 33-34

ir@mrsk-1.ru

<http://www.mrsk-1.ru/en/investors/>



World indexes	Value	Change	
		per day	fr 31.12.20
MOEX Russia	3 969,61	-1,62%	20,69%
S&P 500	4 357,73	0,00%	0,00%
FTSE 100	6 903,91	-0,86%	5,31%
Nikkei	30 500,05	0,00%	11,13%
Sensex	58 490,03	-0,89%	22,49%
CSI300	4 855,94	0,00%	-6,82%
Bovespa	108 843,70	-2,33%	-8,55%

Source: MOEX, Company calculations

Currency rates	Value	Change	
		per day	fr 31.12.20
USD/RUB	72,5602	0,00%	-1,78%
EURO/RUB	85,4614	0,00%	-5,76%

Source: Central Bank of Russia, Company calculations

Liquidity of shares	Rosseti	
	Centre	Centre & Volga Reg
Number of deals, pcs	1 191	3 027
Trading volume, P mln	8,0	60,6
Trading volume, mln pcs	19,8	230,8
Average trading volume over the last 30 days, mln pcs	18,0	87,0
% of the share capital	0,05%	0,20%

Source: MOEX, Company calculations

Shares	Price*, P	MCap, P bln	MCap, \$ mln
Rosseti Centre	0,4026	17,00	234,25
Rosseti Centre and Volga region	0,2626	29,59	407,86

Source: MOEX, Company calculations

Comparison with indexes	Change	
	per day	fr 31.12.20
STOXX 600 Utilities	-0,66%	-2,92%
MoexEU	-1,41%	-8,15%
Rosseti Centre*	-1,42%	0,35%
Rosseti Centre and Volga region*	-5,34%	4,17%

Source: MOEX, Company calculations

Grid companies	Change*	
	per day	fr 31.12.20
Rosseti	-2,23%	-27,11%
Rosseti FGC UES	-1,25%	-15,42%
Rosseti Volga	-1,75%	-17,30%
Rosseti Moscow Region	-1,74%	-7,09%
Rosseti Northern Caucasus	-0,43%	-5,77%
Rosseti North-West	-2,42%	3,68%
Rosseti Ural	-2,34%	2,97%
Rosseti Siberia	-0,66%	-21,38%
Rosseti South	0,22%	-5,34%
Rosseti Lenenergo	-3,10%	19,50%
Rosseti Tomsk	0,00%	-3,90%
Rosseti Kuban	6,03%	3,69%

Source: MOEX, Company calculations

* - at the market price at MOEX

Tickers

Moscow Exchange (MOEX)

Bloomberg

Reuters

[MRKC](#)

[MRKC.RM](#)

[MRKC.MM](#)