

ELECTRIC POWER INDUSTRY NEWS

Russian electrical equipment to be shipped for construction of passenger ships

At a strategic session on the development of transport in June, Mikhail Mishustin called for expanding production, including sea and river vessels on a domestic component base. Russian power engineers have begun to contribute to the implementation of this task.

Read full text: <https://minenergo.gov.ru/>

COMPANY NEWS

Bryansk power engineers completed a number of motor road lighting projects

In a number of districts of the Bryansk region, the branch of Rosseti Centre, PJSC - Bryanskenergo completed the modernization of street lighting on motor road sections.

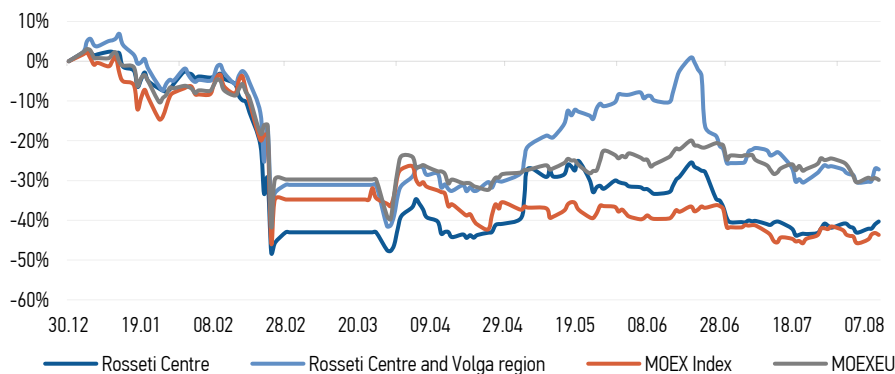
Read full text: <https://go32.ru/>

Power engineers of the Kirovenergo branch repaired 157 km of overhead power lines for 6 months of 2022

The branch of Rosseti Centre and Volga region, PJSC - Kirovenergo summed up the results of the implementation of the repair program for the first half of 2022.

Read full text: <https://mrsk-cp.ru/>

CHANGES OF KEY INDEXES AND SHARES OF THE COMPANIES



IR-NEWS

- Financial statements of [Rosseti Centre](#) and [Rosseti Centre and Volga region](#) under RAS for 1H 2022 published
- [Integrated annual reports](#) of Rosseti Centre, PJSC and Rosseti Centre and Volga region, PJSC for 2021 published
- Annual General Meetings of Shareholders of [Rosseti Centre](#) and [Rosseti Centre and Volga region](#) held

Rosseti Centre, PJSC

119017, Moscow, Malaya Ordynka St., 15

Corporate Governance Department

+7 (495) 747 92 92, ext. 33-34

ir@mrsk-1.ru

<http://www.mrsk-1.ru/en/investors/>



World indexes	Value	Change	
		per day	fr 31.12.21
MOEX Russia	2 133,11	-0,85%	-43,68%
S&P 500	4 207,27	-0,07%	-11,73%
FTSE 100	7 465,91	-0,55%	1,10%
Nikkei	27 819,33	0,00%	-3,38%
Sensex	59 332,60	0,00%	1,85%
CSI300	4 193,54	0,00%	-15,12%
Bovespa	109 717,94	-0,47%	4,67%

Source: MOEX, Company calculations

Currency rates	Value	Change	
		per day	fr 31.12.21
USD/RUB	60,4542	0,12%	-18,63%
EURO/RUB	61,7040	0,24%	-26,60%

Source: Central Bank of Russia, Company calculations

Liquidity of shares	Rosseti Centre	Rosseti Centre & Volga Reg
Number of deals, pcs	643	517
Trading volume, P mln	3,8	5,6
Trading volume, mln pcs	15,3	33,5
Average trading volume over the last 30 days, mln pcs	31,0	59,8
% of the share capital	0,04%	0,03%

Source: MOEX, Company calculations

Shares	Price*, P	MCap, P bln	MCap, \$ mln
Rosseti Centre	0,2462	10,39	171,93
Rosseti Centre and Volga region	0,1679	18,92	313,00

Source: MOEX, Company calculations

Comparison with indexes	Change	
	per day	fr 31.12.21
STOXX 600 Utilities	-0,36%	-5,96%
MoexEU	-0,68%	-29,84%
Rosseti Centre*	1,15%	-40,30%
Rosseti Centre and Volga region*	-0,30%	-27,22%

Source: MOEX, Company calculations

Grid companies	Change*	
	per day	fr 31.12.21
Rosseti	-1,17%	-46,02%
Rosseti FGC UES	-0,35%	-44,00%
Rosseti Volga	3,72%	-41,05%
Rosseti Moscow Region	-0,06%	-30,02%
Rosseti Northern Caucasus	0,42%	-64,31%
Rosseti North-West	-0,91%	-47,34%
Rosseti Ural	0,77%	-11,55%
Rosseti Siberia	0,00%	-23,13%
Rosseti South	0,48%	-31,12%
Rosseti Lenenergo	-0,31%	-22,32%
Rosseti Tomsk	0,00%	-29,09%
Rosseti Kuban	0,18%	-16,89%

Source: MOEX, Company calculations

* - at the market price at MOEX

ickers

Moscow Exchange (MOEX)

Bloomberg

Reuters

[MRKC](#)

[MRKC.RM](#)

[MRKC.MM](#)