

**ELECTRIC POWER INDUSTRY NEWS**
**Rosseti confirmed the highest credit rating from Expert RA**

Expert RA has confirmed PJSC Rosseti's credit rating at ruAAA with a stable outlook, which corresponds to the financial obligations of the Russian Government. The credit ratings of 26 bond issues have also been maintained at the highest level of AAA(ru).

Read full text: <https://www.rosseti.ru>

**COMPANY NEWS**
**Tambovernergo connected new outdoor lighting facilities in two districts of the region**

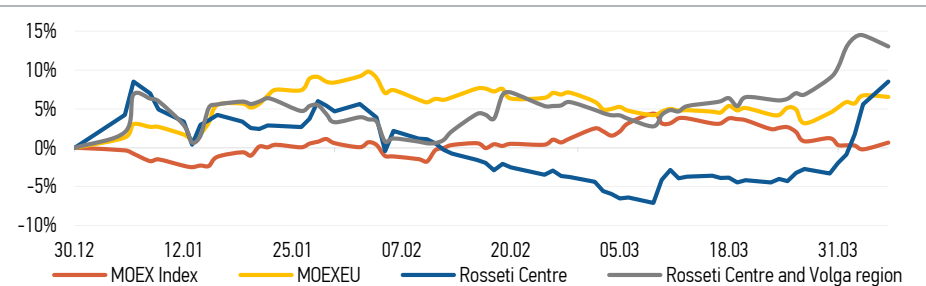
Specialists from the branch of Rosseti Centre - Tambovernergo connected new outdoor lighting facilities to the power grid in the Tambovsky and Bondarsky municipal districts under additional services and grid connection agreements.

Read full text: <https://www.mrsk-1.ru/>

**Power engineers from the Ivenergo branch participated in a job fair at ISPU**

Representatives of Rosseti Centre and Volga region - Ivenergo took part in the traditional job fair organized at Ivanovo State Power Engineering University (ISPU). The event brought together senior students, graduates, and young professionals interested in employment.

Read full text: <https://mrsk-cp.ru>

**CHANGES OF KEY INDEXES AND SHARES OF THE COMPANIES**

**IR-NEWS**

- [Rosseti Centre](#) approved the Business Plan for 2026 and forecast indicators for 2027-2030
- [Rosseti Centre](#) and [Rosseti Centre and Volga region](#) published its audited consolidated financial statements under IFRS for 2025
- [Rosseti Centre](#) and [Rosseti Centre and Volga region](#) published its financial statements for 2025 under RAS
- [Rosseti Centre and Volga region](#) approved the Business Plan for 2026 and forecast indicators for 2027-2030

**Rosseti Centre, PJSC**  
 119017, Moscow, Malaya Ordynka St., 15  
**Corporate Governance Department**  
 +7 (495) 747 92 92, ext. 35-18  
 ir@mrsk-1.ru  
<http://www.mrsk-1.ru/en/investors/>



World indexes	Value	Change	
		per day	fr 31.12.25
MOEX Russia	2 784.87	0.88%	0.66%
S&P 500	6 611.83	0.44%	-4.12%
FTSE 100	10 436.29	0.00%	4.99%
Nikkei	53 413.68	0.55%	6.11%
Sensex	74 106.85	1.07%	-12.48%
CSI300	4 440.79	0.00%	-4.53%
Bovespa	188 161.97	0.06%	16.78%

Source: MOEX, Company calculations

Currency rates	Value	Change	
		per day	fr 31.12.25
USD/RUB	79.7293	0.00%	2.95%
EURO/RUB	92.1915	0.00%	0.78%

Source: Central Bank of Russia, Company calculations

Liquidity of shares	Rosseti Centre	Rosseti Centre & Volga Reg
Number of deals, pcs	12 233	2 454
Trading volume, ₪ mln	130.1	59.7
Trading volume, mln pcs	139.6	96.7
Average trading volume over the last 30 days, mln pcs	36.2	54.1
% of the share capital	0.33%	0.09%

Source: MOEX, Company calculations

Shares	Price*, ₪	MCap, ₪ bln	MCap, \$ mln
Rosseti Centre	0.9318	39.34	493.40
Rosseti Centre and Volga region	0.6174	69.58	872.70

Source: MOEX, Company calculations

Comparison with indexes	Change	
	per day	fr 31.12.25
STOXX 600 Utilities	0.00%	16.34%
MoexEU	-0.18%	6.55%
Rosseti Centre*	2.76%	8.53%
Rosseti Centre and Volga region*	-1.25%	13.04%

Source: MOEX, Company calculations

Grid companies	Change*	
	per day	fr 31.12.25
Rosseti	-0.77%	-1.97%
Rosseti Volga	-7.04%	25.41%
Rosseti Moscow Region	0.40%	30.11%
Rosseti Northern Caucasus	-0.22%	13.88%
Rosseti North-West	0.81%	22.04%
Rosseti Ural	0.59%	28.24%
Rosseti Siberia	0.10%	-3.23%
Rosseti South	5.70%	-7.29%
Rosseti Lenenergo	1.01%	-1.77%
Rosseti Tomsk	1.31%	17.68%

Source: MOEX, Company calculations

\* - at the market price at MOEX

**Tickers**

Moscow Exchange (MOEX)	<b>MRKC</b>
Bloomberg	<b>MRKC.MM</b>
Reuters	<b>MRKC.MM</b>