

# DAILY MARKET REVIEW

## ELECTRIC POWER INDUSTRY NEWS

### Rosseti may attract the EDB to finance projects

Rosseti may attract the Eurasian Development Bank (EDB) to finance projects. This was reported by a TASS correspondent from the ceremony of signing an agreement on strategic cooperation within the framework of the first Eurasian Congress.

Read full text: <https://tass.ru/ekonomika/>

## COMPANY NEWS

### Lipetskenergo's specialists improved the reliability of power supply to consumers in the city of Gryazi

Specialists of the branch "Rosseti Centre Lipetskenergo" completed work on the restoration of a 315-meter section of a 6 kV cable line (CL) in the central part of the city of Gryazi. The line runs along the streets of Krasnaya Ploschad, 30 Let Pobedy, Leninskaya, Tambovskaya, Lesnaya, Lipetskaya, Pushkinskaya and provides electricity to the adjacent residential buildings, as well as the buildings of the city court and prosecutor's office, district administration, military commissariat, Multi-Function Centre, Centre for Cultural Development, dental clinic.

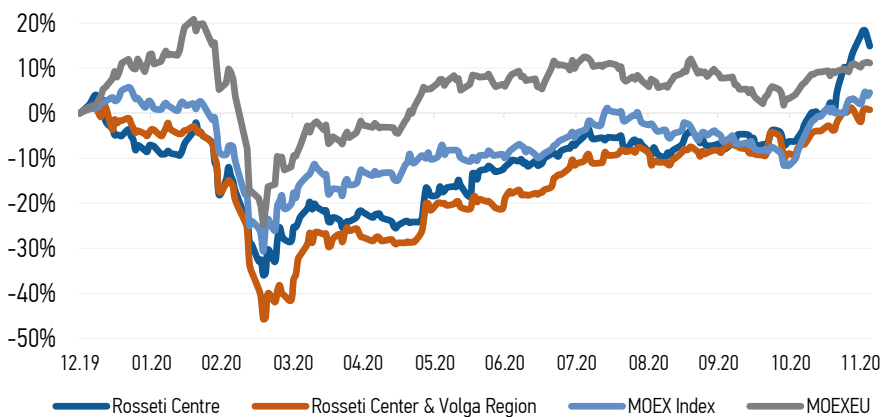
Read full text: <https://www.mrsk-1.ru/press-center/news/>

### Udmurtenergo connected one of the largest farms in the region to the company's grids

"Rosseti Center and Volga Region Udmurtenergo" carried out grid connection of a large farm for 1,118 heads of cattle in the village of Sobino of the Sharkansky district.

Read full text: [https://mrsk-cp.ru/press/company\\_news](https://mrsk-cp.ru/press/company_news)

## CHANGES OF KEY INDEXES AND SHARES OF THE COMPANIES



## IR-NEWS

**1 December 2020** Rosseti Centre - managing organization of Rosseti Center and Volga Region held a conference call and webcast dedicated to the consolidated performance results of the Companies for 9 months of 2020

**20 November 2020** The company "Rosseti Centre" has published its performance results and management discussion and analysis (MD&A) to Interim Financial Statements for 9 months of 2020 under IFRS

**27 October 2020** The Rosseti Centre company published its financial statements for 9 months of 2020 under RAS, net profit increased by 81,3%

### IDGC of Centre, PJSC

119017, Moscow, Malaya Ordynka St., 15

Corporate Governance Department

+7 (495) 747 92 92, ext. 33-34

ir@mrsk-1.ru

<http://www.mrsk-1.ru/en/investors/>



World indexes	Value	Change	
		per day	fr 31.12.19
MOEX Russia	3 184,72	0,70%	4,56%
S&P 500	3 699,12	0,88%	14,50%
FTSE 100	6 524,85	0,53%	-13,49%
Nikkei	26 751,24	-0,22%	13,08%
Sensex	45 079,55	1,00%	9,27%
CSI300	5 065,92	0,18%	23,66%
Bovespa	113 750,20	1,30%	-1,64%

Source: MOEX, Company calculations

Currency rates	Value	Change	
		per day	fr 31.12.19
USD/RUB	75,1996	-0,55%	21,47%
EURO/RUB	91,1946	-0,12%	31,52%

Source: Central Bank of Russia, Company calculations

Liquidity of shares	Rosseti Centre		Rosseti Center & Volga Reg	
	Value	Change per day	Value	Change fr 31.12.19
Number of deals, pcs	1 657		886	
Trading volume, P mln	17,8		12,7	
Trading volume, mln pcs	49,0		52,7	
Average trading volume over the last 30 days, mln pcs	36,8		99,5	
% of the share capital	0,12%		0,05%	

Source: MOEX, Company calculations

Shares	Price**, P	MCap**, P bln	MCap**, \$ mln
Rosseti Centre	0,3658	15,38	204,47
Rosseti Center & Volga Region	0,2408	27,16	361,17

Source: MOEX, Company calculations

Comparison with indexes	Change	
	per day	fr 31.12.19
STOXX 600 Utilities	-0,37%	3,74%
MoexEU	-0,25%	11,09%
Rosseti Centre**	-1,56%	15,39%
Rosseti Center & Volga Region**	-0,25%	0,75%

Source: MOEX, Company calculations

Grid companies	Change**	
	per day	fr 31.12.19
Rosseti	0,30%	23,35%
Rosseti FGC UES	-0,62%	0,93%
Rosseti Volga	-0,73%	-23,15%
Rosseti Moscow Region	-0,36%	15,99%
Rosseti Northern Caucasus	3,15%	0,33%
Rosseti North-West	-0,93%	-0,19%
Rosseti Ural	-1,16%	-17,33%
Rosseti Siberia	0,96%	2,59%
Rosseti South	0,51%	-20,42%
Rosseti Lenenergo	-0,18%	-21,45%
Rosseti Tomsk	0,26%	-10,00%
Rosseti Kuban	-0,73%	6,92%

Source: MOEX, Company calculations

\*\* - at the price of last transaction at MOEX

### Tickers

Moscow Exchange (MOEX)  
Bloomberg  
Reuters

MRKC  
MRKC.RM  
MRKC.MM