

# DAILY MARKET REVIEW

## ELECTRIC POWER INDUSTRY NEWS

### Russia can deal with cross-subsidies with "fair" tariffs

Today, at the expense of non-population consumers, the entire population is subsidized, including citizens whose incomes allow them to pay for electricity at market prices, says Olga Temnaya, Director of the Centre for Methodology and Forensic Economic Expertise of the Institute for Economic Research and Development at the RANEPA.

Read full text: <https://www.eprussia.ru/news/>

## COMPANY NEWS

### Lipetskenergo's specialists demonstrated their readiness to take action to eliminate consequences of a forest fire

Specialists of the branch of IDGC of Centre, PJSC - Lipetskenergo took part in the regional command-staff exercise, held in the village of Verbilovo of the Lipetsky district under the leadership of the head of the region Igor Artamonov.

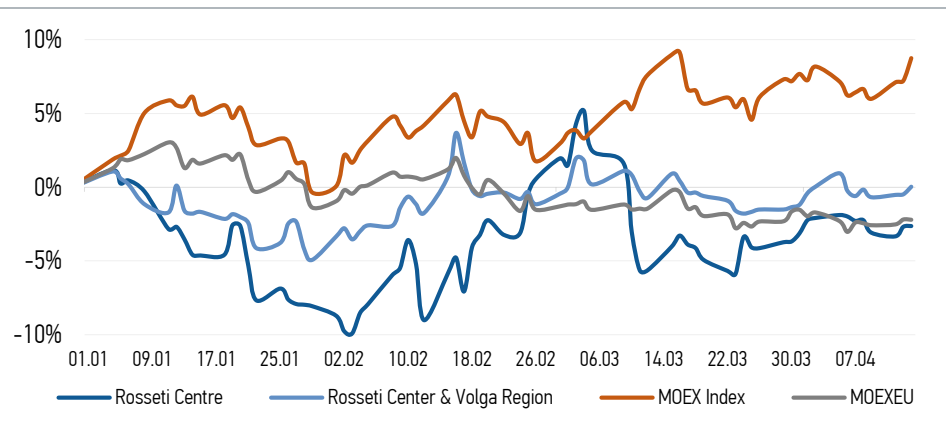
Read full text: <https://www.mrsk-1.ru/press-center/news/>

### "Rosseti Center and Volga Region Ivenergo" completed the grid connection of the "Tikhyy Bereg" residential complex in Kokhma

"Rosseti Center and Volga Region Ivenergo" carried out grid connection of multi-apartment residential buildings under construction in the town of Kokhma of the Ivanovo region. The new residential complex "Microdistrict "Tikhyy Bereg" is located in the centre of the urban district of Kokhma of the Ivanovo region on Ivanovskaya street. in the area of promising residential development on the bank of the reservoir "Zaprudka".

Read full text: <https://mrsk-cp.ru/affiliates/ivenergo/news/>

## CHANGES OF KEY INDEXES AND SHARES OF THE COMPANIES



## IR-NEWS

- [Rosseti Centre and Rosseti Center and Volga Region](#) entered the short-list of the rating of companies by corporate ESG practice
- [Rosseti Centre - managing organization of Rosseti Center and Volga Region](#) held a conference call and webcast dedicated to the consolidated performance results of the Companies for 2020
- Audited consolidated financial results of "[Rosseti Centre](#)" and "[Rosseti Center and Volga Region](#)" for 2020 were published

## IDGC of Centre, PJSC

119017, Moscow, Malaya Ordynka St., 15

Corporate Governance Department

+7 (495) 747 92 92, ext. 33-34

ir@mrsk-1.ru

<http://www.mrsk-1.ru/en/investors/>



World indexes	Value	Change	
		per day	fr 31.12.20
MOEX Russia	3 576,89	1,43%	8,75%
S&P 500	4 124,66	-0,41%	9,81%
FTSE 100	6 939,58	0,71%	5,85%
Nikkei	29 620,99	-0,44%	7,93%
Sensex	48 544,06	0,00%	1,66%
CSI300	4 980,63	0,83%	-4,43%
Bovespa	120 294,70	0,84%	1,07%

Source: MOEX, Company calculations

Currency rates	Value	Change	
		per day	fr 31.12.20
USD/RUB	77,2535	-0,33%	4,57%
EURO/RUB	91,9162	-0,16%	1,36%

Source: Central Bank of Russia, Company calculations

Liquidity of shares	Rosseti Centre	Rosseti Center & Volga Reg
Number of deals, pcs	650	334
Trading volume, ₺ mln	4,9	8,3
Trading volume, mln pcs	12,5	33,0
Average trading volume over the last 30 days, mln pcs	26,0	61,0
% of the share capital	0,03%	0,03%

Source: MOEX, Company calculations

Shares	Price*, ₺	MCap, ₺ bln	MCap, \$ mln
Rosseti Centre	0,3906	16,49	213,46
Rosseti Center & Volga Region	0,2522	28,42	367,91

Source: MOEX, Company calculations

Comparison with indexes	Change	
	per day	fr 31.12.20
STOXX 600 Utilities	-0,71%	0,79%
MoexEU	-0,02%	-2,22%
Rosseti Centre*	0,05%	-2,64%
Rosseti Center & Volga Region*	0,52%	0,04%

Source: MOEX, Company calculations

Grid companies	Change*	
	per day	fr 31.12.20
Rosseti	-0,49%	-18,24%
Rosseti FGC UES	0,20%	-3,93%
Rosseti Volga	-0,46%	-3,61%
Rosseti Moscow Region	1,97%	-14,68%
Rosseti Northern Caucasus	-0,08%	-9,51%
Rosseti North-West	0,19%	-2,12%
Rosseti Ural	-0,40%	-7,42%
Rosseti Siberia	-0,45%	-13,04%
Rosseti South	-0,21%	-4,11%
Rosseti Lenenergo	0,33%	14,91%
Rosseti Tomsk	0,00%	-5,71%
Rosseti Kuban	0,00%	3,39%

Source: MOEX, Company calculations

\* - at the market price at MOEX

## ickers

Moscow Exchange (MOEX)

Bloomberg

Reuters

MRKC

MRKC.RM

MRKC.MM