

DAILY MARKET REVIEW

ELECTRIC POWER INDUSTRY NEWS

Rosseti began to develop the R&D program for 2022-2024

Universities, research institutes, design, production, medium and small innovative enterprises, individuals - scientists, as well as subsidiaries of the holding can offer their topics of research, development and technological work (R&D). Completed applications can be submitted until 30 April 2021.

Read full text: <https://www.rosseti.ru/press/news/>

COMPANY NEWS

Lipetskenergo receives thanks for installation of street lighting in the Usmansky district

The branch "Rosseti Centre Lipetskenergo" received a letter of gratitude from the head of the Borovsky rural settlement of the Usmansky municipal district of the Lipetsk region. In it, the head of the village council thanks the power engineers for the high-quality and fast performance of work on the installation of street lighting in the village of Borovoye, for their indifferent attitude to the requests and fate of the settlement.

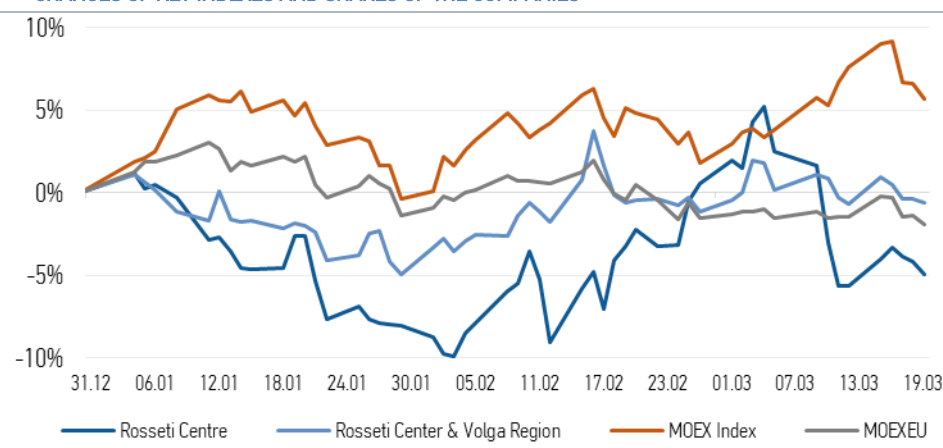
Read full text: <https://www.mrsk-1.ru/press-center/news/>

Vladimirenergo prepares for the spring flood

"Rosseti Center and Volga Region Vladimirenergo" implemented a set of measures to ensure trouble-free operation of power equipment during the spring flood. During the period of massive snowmelt and spring flooding of rivers, there is a likelihood of flooding of power grids, which complicates their operating conditions and increases the risk of equipment damage. To ensure reliable power supply to consumers in Vladimirenergo, a whole range of flood control measures are implemented annually.

Read full text: <https://mrsk-cp.ru/press-center/news/>

CHANGES OF KEY INDEXES AND SHARES OF THE COMPANIES



IR-NEWS

11 March 2021 Audited consolidated financial results of "[Rosseti Center and Volga Region](#)" for 2020 were published

10 March 2021 Audited consolidated financial results of "[Rosseti Centre](#)" for 2020 were published

25 February 2021 Financial statements of [Rosseti Centre](#) and [Rosseti Center and Volga Region](#) for 2020 under RAS were published

World indexes	Value	Change	
		per day	fr 31.12.20
MOEX Russia	3 475,26	-0,84%	5,66%
S&P 500	3 913,10	-0,06%	4,18%
FTSE 100	6 708,71	-1,05%	2,33%
Nikkei	29 792,05	-1,41%	8,56%
Sensex	49 858,24	1,30%	4,41%
CSI300	5 007,09	-2,62%	-3,92%
Bovespa	116 221,60	1,21%	-2,35%

Source: MOEX, Company calculations

Currency rates	Value	Change	
		per day	fr 31.12.20
USD/RUB	73,6582	0,76%	-0,29%
EURO/RUB	88,1173	1,32%	-2,83%

Source: Central Bank of Russia, Company calculations

Liquidity of shares	Rosseti	
	Centre	Center & Volga Reg
Number of deals, pcs	788	651
Trading volume, P mln	3,7	30,7
Trading volume, mln pcs	9,8	122,3
Average trading volume over the last 30 days, mln pcs	46,9	87,0
% of the share capital	0,02%	0,11%

Source: MOEX, Company calculations

Shares	Price*, P	MCap, P bln	MCap, \$ mln
Rosseti Centre	0,3814	16,10	218,60
Rosseti Center & Volga Region	0,2506	28,24	383,42

Source: MOEX, Company calculations

Comparison with indexes	Change	
	per day	fr 31.12.20
STOXX 600 Utilities	1,54%	-3,28%
MoexEU	-0,60%	-1,96%
Rosseti Centre*	-0,83%	-4,94%
Rosseti Center & Volga Region*	-0,24%	-0,60%

Source: MOEX, Company calculations

Grid companies	Change*	
	per day	fr 31.12.20
Rosseti	-1,77%	-11,63%
Rosseti FGC UES	0,22%	-3,66%
Rosseti Volga	-0,90%	-3,02%
Rosseti Moscow Region	0,93%	-14,68%
Rosseti Northern Caucasus	-0,14%	-6,25%
Rosseti North-West	-0,27%	0,92%
Rosseti Ural	-0,77%	-4,08%
Rosseti Siberia	0,00%	-10,30%
Rosseti South	0,00%	-3,90%
Rosseti Lenenergo	-0,68%	11,66%
Rosseti Tomsk	0,28%	-5,45%
Rosseti Kuban	0,00%	4,42%

Source: MOEX, Company calculations

* - at the market price at MOEX

IDGC of Centre, PJSC

119017, Moscow, Malaya Ordynka St., 15

Corporate Governance Department

+7 (495) 747 92 92, ext. 33-34

ir@mrsk-1.ru

<http://www.mrsk-1.ru/en/investors/>



ickers

Moscow Exchange (MOEX)
Bloomberg
Reuters

MRKC
MRKC.RM
MRKC.MM