

DAILY MARKET REVIEW

ELECTRIC POWER INDUSTRY NEWS

IEA reports that energy investments reached pre-crisis levels

Global investment in energy in 2021 will increase by 10%, to \$1.9 trillion, thereby returning to pre-crisis levels, follows from the IEA report published on Wednesday. At the same time, for the first time, the focus has shifted towards the electric power industry to the detriment of fossil energy sources.

Read full text: <https://tass.ru/ekonomika/>

COMPANY NEWS

Annual General Meeting of Shareholders of IDGC of Centre, PJSC held

On 31 May 2021, the Annual General Meeting of Shareholders of IDGC of Centre, PJSC was held in the form of absentee voting. The shareholders approved the annual report and annual financial statements for 2020, decisions were made on the distribution of profits based on the results of 2020 and the payment of dividends.

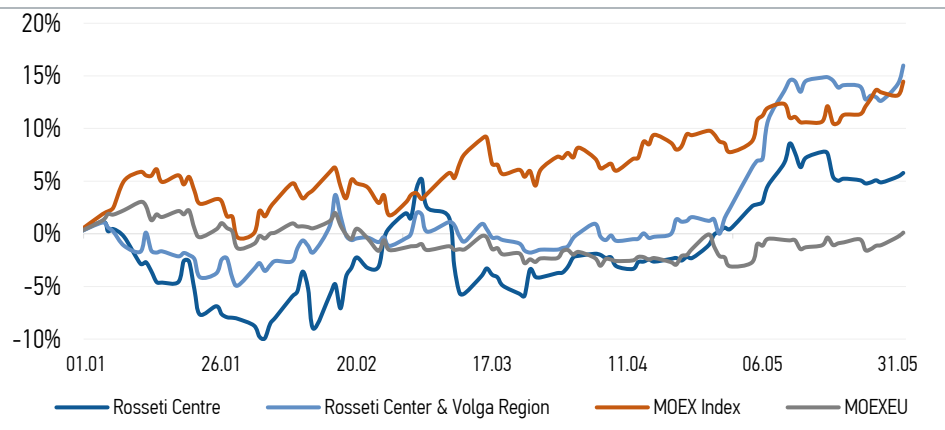
Read full text: <https://www.mrsk-1.ru/press-center/news/>

Igor Makovskiy and Arkady Zamoskovny discussed the development of social partnership

General Director of Rosseti Centre - the managing organization of Rosseti Centre and Volga Region and President of the ERA of Russia Association held a working meeting in Moscow. They dwelled on the development of new mechanisms of social partnership and noted the relevance of holding an interregional meeting with leaders of trade union organizations in the third quarter of 2021 in the Nizhny Novgorod region.

Read full text: https://mrsk-cp.ru/press/company_news/

CHANGES OF KEY INDEXES AND SHARES OF THE COMPANIES



IR-NEWS

- Annual General Meeting of Shareholders of [IDGC of Centre, PJSC](#) held
- [Rosseti Centre](#) - managing organization of Rosseti Center and Volga Region held a conference call and webcast dedicated to the consolidated performance results of the Companies for 3 months of 2021
- [Rosseti Centre](#) and [Rosseti Center and Volga Region](#) published its unaudited interim condensed consolidated financial statements for 3 months of 2021

IDGC of Centre, PJSC

119017, Moscow, Malaya Ordynka St., 15

Corporate Governance Department

+7 (495) 747 92 92, ext. 33-34

ir@mrsk-1.ru

<http://www.mrsk-1.ru/en/investors/>

EUROLAND.com



World indexes	Value	Change	
		per day	fr 31.12.20
MOEX Russia	3 764,59	1,15%	14,46%
S&P 500	4 202,04	-0,05%	11,87%
FTSE 100	7 080,46	0,82%	8,00%
Nikkei	28 814,34	-0,16%	4,99%
Sensex	51 934,88	0,00%	8,76%
CSI300	5 341,68	0,19%	2,50%
Bovespa	128 267,10	1,63%	7,77%

Source: MOEX, Company calculations

Currency rates	Value	Change	
		per day	fr 31.12.20
USD/RUB	73,2965	-0,39%	-0,78%
EURO/RUB	89,3778	-0,33%	-1,44%

Source: Central Bank of Russia, Company calculations

Liquidity of shares	Rosseti	
	Centre	Center & Volga Reg
Number of deals, pcs	2 174	1 510
Trading volume, ₺ mln	59,6	43,7
Trading volume, mln pcs	140,5	149,5
Average trading volume over the last 30 days, mln pcs	37,0	137,7
% of the share capital	0,33%	0,13%

Source: MOEX, Company calculations

Shares	Price*, ₺	MCap, ₺ bln	MCap, \$ mln
Rosseti Centre	0,4244	17,92	244,45
Rosseti Center & Volga Region	0,2924	32,95	449,58

Source: MOEX, Company calculations

Comparison with indexes	Change	
	per day	fr 31.12.20
STOXX 600 Utilities	0,28%	-0,04%
MoexEU	0,40%	0,12%
Rosseti Centre*	0,33%	5,78%
Rosseti Center & Volga Region*	1,53%	15,99%

Source: MOEX, Company calculations

Grid companies	Change*	
	per day	fr 31.12.20
Rosseti	0,31%	-20,29%
Rosseti FGC UES	0,00%	-1,33%
Rosseti Volga	0,00%	-11,19%
Rosseti Moscow Region	-0,33%	-13,32%
Rosseti Northern Caucasus	3,78%	-6,79%
Rosseti North-West	0,00%	-7,54%
Rosseti Ural	0,00%	-10,26%
Rosseti Siberia	1,10%	-16,30%
Rosseti South	-0,22%	-5,75%
Rosseti Lenenergo	2,15%	18,36%
Rosseti Tomsk	0,00%	-3,38%
Rosseti Kuban	0,00%	1,03%

Tickers

Moscow Exchange (MOEX)

Bloomberg

Reuters

[MRKC](#)

[MRKC.MM](#)

[MRKC.MM](#)