

DAILY MARKET REVIEW

ELECTRIC POWER INDUSTRY NEWS

Electricity consumption in the world by the end of 2020 to decrease by 2%, in the Russian Federation - by 3%

By the end of 2020, global energy consumption will decrease by 2%. Previously, the forecast for the reduction was 5%, follows from the report of the International Energy Agency.

Read full text: <http://www.bigpowernews.ru/>

COMPANY NEWS

Specialists of the branch "Rosseti Centre Smolenskenergo" in 2020 repaired more than 1.5 thousand km of power lines of all voltage classes

The planned amount of financing for the repair program of the branch "Rosseti Centre Smolenskenergo" in 2020 should amount to 248.55 million rubles. Over the past 10 months, the branch's power engineers repaired 1,519.658 km of power lines of all voltage classes and 674 transformer substations of 6-10/0.4 kV.

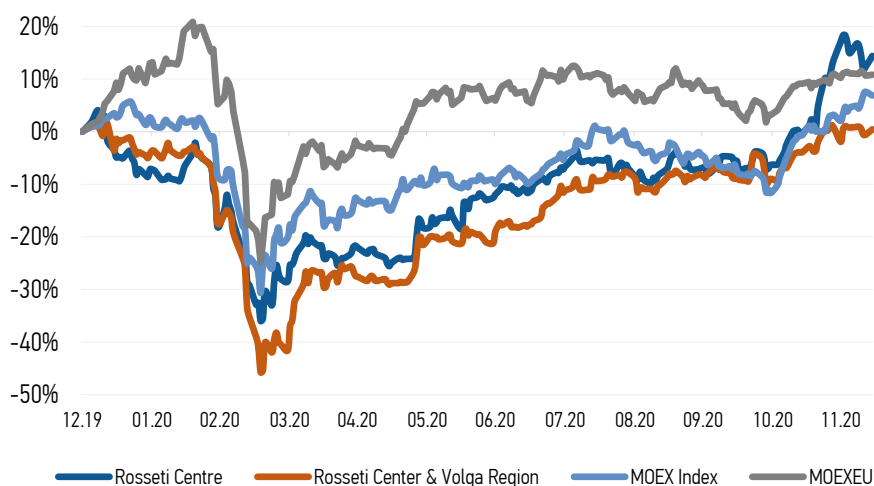
Read full text: <https://www.mrsk-1.ru/press-center/news/>

Specialists of "Rosseti Center and Volga Region Marienergo" modernized the 110 kV "Paranga" substation

"Rosseti Center and Volga Region Marienergo" has implemented a project to modernize the 110 kV "Paranga" substation with installation of remote control and communication equipment.

Read full text: https://mrsk-cp.ru/press/company_news

CHANGES OF KEY INDEXES AND SHARES OF THE COMPANIES



IR-NEWS

1 December 2020 Rosseti Centre - managing organization of Rosseti Center and Volga Region held a conference call and webcast dedicated to the consolidated performance results of the Companies for 9 months of 2020

20 November 2020 The company "Rosseti Centre" has published its performance results and management discussion and analysis (MD&A) to Interim Financial Statements for 9 months of 2020 under IFRS

27 October 2020 The Rosseti Centre company published its financial statements for 9 months of 2020 under RAS, net profit increased by 81,3%

IDGC of Centre, PJSC

119017, Moscow, Malaya Ordynka St., 15

Corporate Governance Department

+7 (495) 747 92 92, ext. 33-34

ir@mrsk-1.ru

<http://www.mrsk-1.ru/en/investors/>



World indexes	Value	Change	
		per day	fr 31.12.19
MOEX Russia	3 254,83	-0,66%	6,86%
S&P 500	3 647,49	-0,44%	12,90%
FTSE 100	6 531,83	-0,23%	-13,40%
Nikkei	26 732,44	0,30%	13,00%
Sensex	46 253,46	0,34%	12,12%
CSI300	4 934,84	0,92%	20,46%
Bovespa	114 611,10	-0,45%	-0,89%

Source: MOEX, Company calculations

Currency rates	Value	Change	
		per day	fr 31.12.19
USD/RUB	73,87	1,03%	19,33%
EURO/RUB	89,69	1,03%	29,35%

Source: Central Bank of Russia, Company calculations

Liquidity of shares	Rosseti Centre	Rosseti Center & Volga Reg
	Number of deals, pcs	1 423
Trading volume, P mln	13,2	23,6
Trading volume, mln pcs	36,3	98,3
Average trading volume over the last 30 days, mln pcs	40,7	94,9
% of the share capital	0,09%	0,09%

Source: MOEX, Company calculations

Shares	Price*, P	MCap, P bln	MCap, \$ mln
Rosseti Centre	0,3626	15,31	207,23
Rosseti Center & Volga Region	0,2399	27,07	366,45

Source: MOEX, Company calculations

Comparison with indexes	Change	
	per day	fr 31.12.19
STOXX 600 Utilities	0,86%	4,07%
MoexEU	0,16%	10,83%
Rosseti Centre*	2,55%	14,38%
Rosseti Center & Volga Region*	0,84%	0,38%

Source: MOEX, Company calculations

Grid companies	Change*	
	per day	fr 31.12.19
Rosseti	0,12%	20,10%
Rosseti FGC UES	2,19%	2,73%
Rosseti Volga	-0,59%	-23,72%
Rosseti Moscow Region	-0,11%	13,55%
Rosseti Northern Caucasus	0,41%	-2,67%
Rosseti North-West	0,48%	-2,71%
Rosseti Ural	0,44%	-16,97%
Rosseti Siberia	-0,15%	9,87%
Rosseti South	-0,85%	-24,37%
Rosseti Lenenergo	-1,46%	-23,30%
Rosseti Tomsk	2,11%	-9,77%
Rosseti Kuban	-0,72%	7,70%

Source: MOEX, Company calculations

* - at the price of last transaction at MOEX

Tickers

Moscow Exchange (MOEX)
Bloomberg
Reuters

MRKC
MRKC.RM
MRKC.MM