

# DAILY MARKET REVIEW

## ELECTRIC POWER INDUSTRY NEWS

### Mobile power plants to be placed in a separate structure

According to Kommersant's information, the government is considering the possibility of creating a special infrastructure organization that will be responsible for managing mobile power plants with a capacity of about 400 MW, used to secure the energy system. It is assumed that this company will receive a fee for placement of the mobile reserve. Now the mobile power plants belong to Federal Grid Company, and the mechanism for transferring property to the new structure is not yet clear.

Read full text: <https://www.kommersant.ru/>

## COMPANY NEWS

### "Rosseti Centre Smolenskenergo" contributes to development of agriculture in the Smolensk region by connecting new facilities to power grids

The branch "Rosseti Centre Smolenskenergo" in April 2021 completed connection to power grids of three agricultural facilities at once.

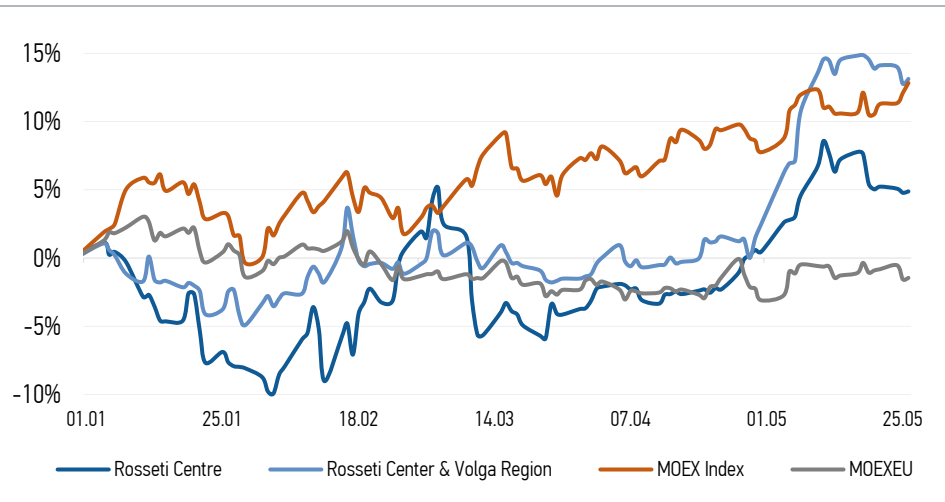
Read full text: <https://www.mrsk-1.ru/press-center/news/>

### Power engineers of Vladimirenergo repaired more than 350 km of overhead power lines for four months of this year

Power engineers of "Rosseti Center and Volga Region Vladimirenergo" have summed up the results of the repair program implementation since the beginning of 2021.

Read full text: [https://mrsk-cp.ru/press/company\\_news/](https://mrsk-cp.ru/press/company_news/)

## CHANGES OF KEY INDEXES AND SHARES OF THE COMPANIES



## IR-NEWS

- [Rosseti Centre](#) and [Rosseti Center and Volga Region](#) published its unaudited interim condensed consolidated financial statements for 3 months of 2021
- The Boards of Directors of [Rosseti Centre](#) and [Rosseti Center and Volga Region](#) decided to convene the Annual General Meeting of Shareholders in the form of absentee voting
- Financial statements of [Rosseti Centre](#) and [Rosseti Center and Volga Region](#) for Q1 2021 under RAS were published

## IDGC of Centre, PJSC

119017, Moscow, Malaya Ordynka St., 15

### Corporate Governance Department

+7 (495) 747 92 92, ext. 33-34

ir@mrsk-1.ru

<http://www.mrsk-1.ru/en/investors/>




World indexes	Value	Change	
		per day	fr 31.12.20
MOEX Russia	3 711,05	0,66%	12,83%
S&P 500	4 195,99	0,19%	11,71%
FTSE 100	7 026,93	-0,04%	7,19%
Nikkei	28 642,19	0,31%	4,37%
Sensex	51 017,52	0,75%	6,84%
CSI300	5 320,59	0,04%	2,10%
Bovespa	123 989,20	0,81%	4,18%

Source: MOEX, Company calculations

Currency rates	Value	Change	
		per day	fr 31.12.20
USD/RUB	73,3963	-0,18%	-0,65%
EURO/RUB	89,9545	0,30%	-0,80%

Source: Central Bank of Russia, Company calculations

Liquidity of shares	Rosseti Centre	Rosseti Center & Volga Reg
Number of deals, pcs	1 079	1 031
Trading volume, ₺ mln	10,1	17,9
Trading volume, mln pcs	24,0	62,9
Average trading volume over the last 30 days, mln pcs	27,3	126,0
% of the share capital	0,06%	0,06%

Source: MOEX, Company calculations

Shares	Price*, ₺	MCap, ₺ bln	MCap, \$ mln
Rosseti Centre	0,4208	17,77	242,05
Rosseti Center & Volga Region	0,2852	32,14	437,92

Source: MOEX, Company calculations

Comparison with indexes	Change	
	per day	fr 31.12.20
STOXX 600 Utilities	0,05%	1,48%
MoexEU	0,10%	-1,45%
Rosseti Centre*	0,10%	4,89%
Rosseti Center & Volga Region*	0,32%	13,13%

Source: MOEX, Company calculations

Grid companies	Change*	
	per day	fr 31.12.20
Rosseti	0,43%	-21,21%
Rosseti FGC UES	-1,94%	-1,46%
Rosseti Volga	-0,67%	-12,59%
Rosseti Moscow Region	-0,56%	-10,60%
Rosseti Northern Caucasus	3,53%	-6,39%
Rosseti North-West	0,10%	-8,00%
Rosseti Ural	0,00%	-11,74%
Rosseti Siberia	-0,16%	-17,34%
Rosseti South	-1,19%	-6,06%
Rosseti Lenenergo	-1,31%	15,49%
Rosseti Tomsk	0,00%	-3,12%
Rosseti Kuban	-2,39%	2,21%

Source: MOEX, Company calculations

## Tickers

Moscow Exchange (MOEX)

Bloomberg

Reuters

MRKC

MRKC.RM

MRKC.MM